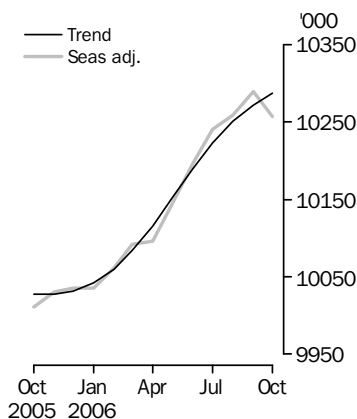


# LABOUR FORCE

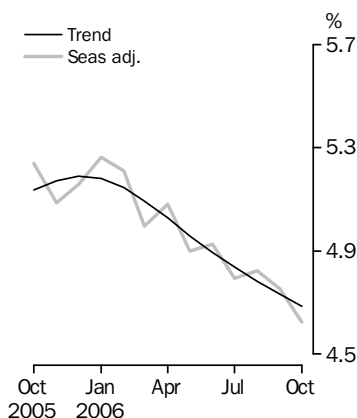
AUSTRALIA

EMBARGO: 11.30AM (CANBERRA TIME) THURS 9 NOV 2006

## Employed Persons



## Unemployment rate



## INQUIRIES

For further information about these and related statistics, contact the National Information and Referral Service on 1300 135 070 or Bjorn Jarvis on Canberra (02) 6252 6525.

## KEY FIGURES

	Sep 2006	Oct 2006	Sep 06 to Oct 06	Oct 05 to Oct 06
<b>Trend</b>				
Employed persons ('000)	10 272.1	10 287.4	15.2	2.6 %
Unemployed persons ('000)	510.4	505.6	-4.8	-6.9 %
Unemployment rate (%)	4.7	4.7	0.0 pts	-0.5 pts
Participation rate (%)	64.9	65.0	0.0 pts	0.5 pts
<b>Seasonally Adjusted</b>				
Employed persons ('000)	10 289.0	10 256.9	-32.1	2.5 %
Unemployed persons ('000)	513.4	497.2	-16.2	-10.2 %
Unemployment rate (%)	4.8	4.6	-0.1 pts	-0.6 pts
Participation rate (%)	65.1	64.7	-0.4 pts	0.2 pts

## KEY POINTS

### TREND ESTIMATES (MONTHLY CHANGE)

- EMPLOYMENT increased to 10,287,400
- UNEMPLOYMENT decreased to 505,600
- UNEMPLOYMENT RATE remained at 4.7%
- PARTICIPATION RATE increased to 65.0%

### SEASONALLY ADJUSTED ESTIMATES (MONTHLY CHANGE)

#### EMPLOYMENT

- decreased by 32,100 to 10,256,900. Full-time employment decreased by 48,600 to 7,306,200 and part-time employment increased by 16,600 to 2,950,800.

#### UNEMPLOYMENT

- decreased by 16,200 to 497,200. The number of persons looking for full-time work decreased by 4,800 to 355,000 and the number of persons looking for part-time work decreased by 11,400 to 142,200.

#### UNEMPLOYMENT RATE

- decreased by 0.1 percentage point to 4.6%. The male unemployment rate decreased by 0.2 percentage points to 4.5% and the female unemployment rate remained at 4.8%.

#### PARTICIPATION RATE

- decreased by 0.4 percentage points to 64.7%.

# NOTES

## FORTHCOMING ISSUES

<i>ISSUE</i>	<i>RELEASE DATE</i>
November 2006	7 December 2006
December 2006	11 January 2007
January 2007	8 February 2007
February 2007	15 March 2007
March 2007	12 April 2007
April 2007	10 May 2007

## CHANGES THIS MONTH

The ABS has introduced two new spreadsheets to the electronic product *Labour Force, Australia, Spreadsheets (cat. no. 6202.0.55.001)*, which complement the data in this publication. These spreadsheets contain trend, seasonally adjusted and original estimates for persons aged 15 to 24 and 15 to 64 years. These new spreadsheets have been developed in response to increasing client interest in these age groups.

## ROUNDING

Estimates of monthly change shown on the front cover have been calculated using unrounded estimates, and may be different from, but are more accurate than, movements obtained from the rounded estimates. The graphs on the front cover also depict unrounded estimates.

## SAMPLING ERRORS

The estimates in this publication are based on a sample survey. Because the entire population is not enumerated, the published estimates and the movements derived from them are subject to sampling variability. Standard errors give a measure of this variability and appear on pages 27 and 28.

The 95% confidence intervals below provide another way of looking at the variability inherent in estimates from sample surveys. The interval bounded by the two limits is the 95% confidence interval. A 95% confidence interval has a 95% chance of including the true value of the estimate.

### MOVEMENTS IN SEASONALLY ADJUSTED SERIES BETWEEN SEPTEMBER AND OCTOBER 2006

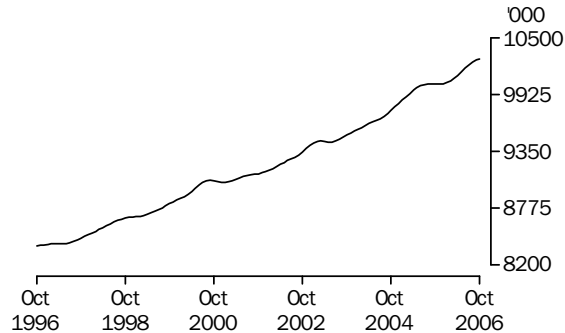
	<i>Monthly change</i>	<i>95% Confidence interval</i>	<i>95% Confidence interval</i>	<i>95% Confidence interval</i>
Total Employment	-32 100	-84 700	to	20 500
Total Unemployment	-16 200	-43 800	to	11 400
Unemployment rate	-0.1 pts	-0.3 pts	to	0.1 pts
Participation rate	-0.4 pts	-0.8 pts	to	0.0 pts

Peter Harper  
Acting Australian Statistician

# PRINCIPAL LABOUR FORCE SERIES TREND ESTIMATES

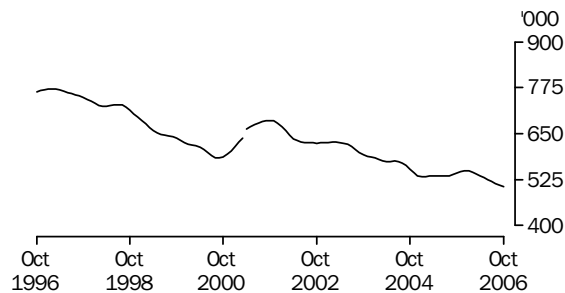
## EMPLOYED PERSONS

The trend estimate of employed persons rose from 8,392,400 in October 1996 to 9,056,300 in September 2000. The trend then fell slightly to 9,037,600 in January 2001, before generally rising to stand at a high of 10,287,400 in October 2006.



## UNEMPLOYED PERSONS

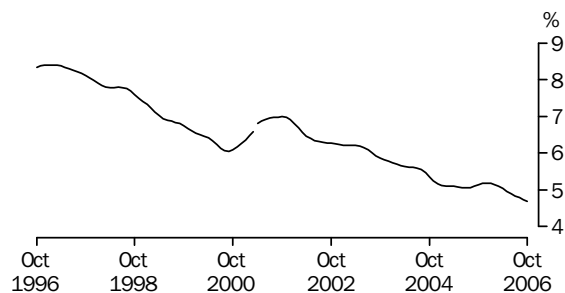
The trend estimate of unemployed persons generally fell from 763,300 in October 1996 to 583,800 in September 2000, before rising to 685,900 in October 2001. The trend then fell to 532,500 in January 2005, before rising to 549,100 in December 2005. Since then, the trend has fallen to stand at 505,600 in October 2006.



Series break at April 2001; see paragraph 13 of Explanatory Notes.

## UNEMPLOYMENT RATE

The trend unemployment rate generally fell from 8.3% in October 1996 to 6.1% in September 2000. After rising to 7.0% in October 2001, the trend fell to 5.1% in July 2005. The trend rose slightly to 5.2% in December 2005, before falling to stand at 4.7% in October 2006.



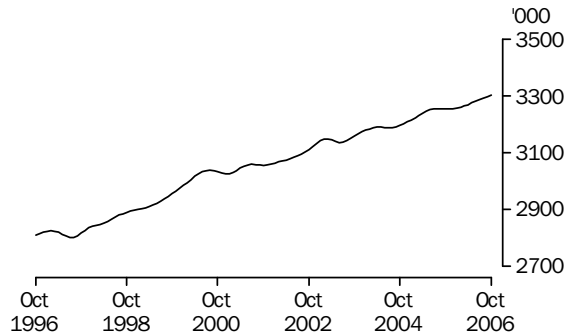
Series break at April 2001; see paragraph 13 of Explanatory Notes.

## STATES TREND ESTIMATES

### EMPLOYED PERSONS

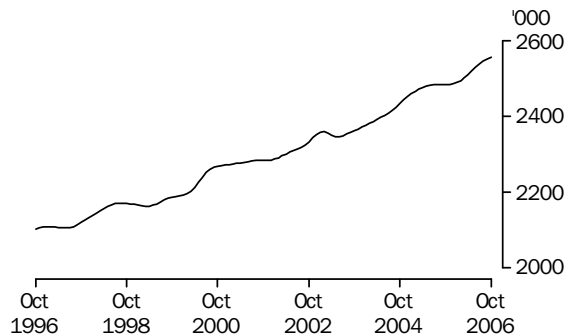
#### NEW SOUTH WALES

The trend estimate of employed persons in New South Wales rose from 2,810,700 in October 1996 to 2,825,600 in February 1997. After falling to 2,801,700 in July 1997, the trend rose steadily to 3,038,100 in August 2000. Apart from small decreases in late 2000 and early 2003, the trend has since generally risen to stand at 3,301,700 in October 2006.



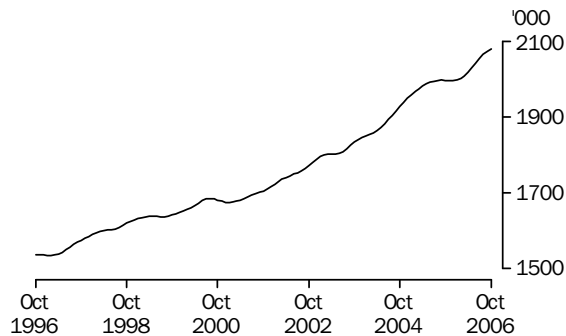
#### VICTORIA

The trend estimate of employed persons in Victoria generally rose from 2,103,400 in October 1996 to 2,359,300 in February 2003. After falling to 2,346,000 in June 2003, the trend has generally risen to stand at 2,555,600 in October 2006.



#### QUEENSLAND

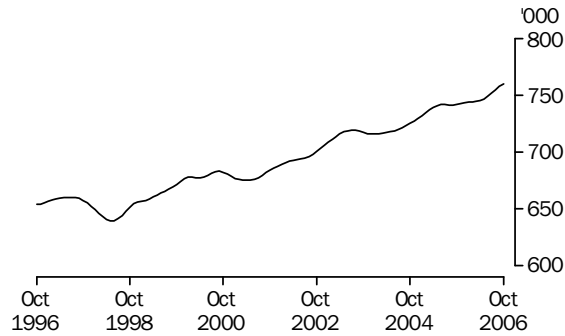
The trend estimate of employed persons in Queensland rose steadily from 1,536,300 in October 1996 to 1,802,300 in April 2003. The trend has since risen more quickly to stand at 2,080,400 in October 2006.



## STATES TREND ESTIMATES *continued*

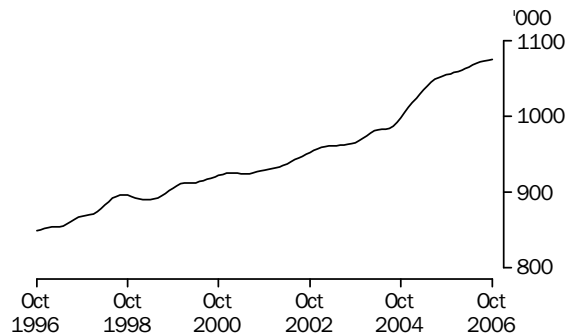
### SOUTH AUSTRALIA

The trend estimate of employed persons in South Australia remained relatively steady from 654,400 in October 1996 until July 1997, when it stood at 660,200. The trend estimate then fell to 639,600 in June 1998, before generally rising to stand at 759,900 in October 2006.



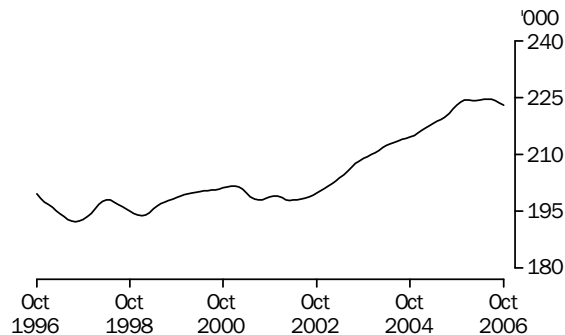
### WESTERN AUSTRALIA

The trend estimate of employed persons in Western Australia generally rose from 849,200 in October 1996 to 986,800 in August 2004. The trend then increased rapidly for 13 months before returning to steadier growth. The trend now stands at 1,074,500 in October 2006.



### TASMANIA

The trend estimate of employed persons in Tasmania, although fluctuating, remained relatively steady from 199,600 in October 1996 until March 2002, when it stood at 197,900. The trend then rose steadily to 224,300 in January 2006, but has flattened since then to stand at 223,000 in October 2006.



# LABOUR FORCE STATUS (AGED 15 YEARS & OVER): Trend

	EMPLOYED			UNEMPLOYED		UNEMPLOYMENT RATE			Participation rate
	Full time	Part time	Total	Looking for f/t work	Total	Labour force	Looking for f/t work	Total	
	'000	'000	'000	'000	'000	'000	%	%	
MALES									
October 2003	4 509.3	777.3	5 286.7	259.7	315.9	5 602.6	5.4	5.6	71.6
October 2004	4 586.4	810.4	5 396.8	238.1	301.7	5 698.4	4.9	5.3	71.5
2005									
October	4 714.6	807.7	5 522.3	234.1	295.2	5 817.6	4.7	5.1	72.1
November	4 712.9	808.5	5 521.4	236.4	299.0	5 820.4	4.8	5.1	72.0
December	4 712.9	811.2	5 524.0	236.7	300.8	5 824.9	4.8	5.2	72.0
2006									
January	4 715.5	815.5	5 530.9	235.1	300.0	5 830.9	4.7	5.1	72.0
February	4 720.5	820.9	5 541.4	232.4	296.9	5 838.3	4.7	5.1	72.0
March	4 727.5	827.0	5 554.5	229.4	292.6	5 847.1	4.6	5.0	72.0
April	4 737.0	832.6	5 569.6	226.6	288.0	5 857.7	4.6	4.9	72.1
May	4 749.3	837.1	5 586.4	224.1	284.0	5 870.4	4.5	4.8	72.1
June	4 762.6	840.8	5 603.4	221.8	281.0	5 884.4	4.5	4.8	72.2
July	4 774.5	844.9	5 619.4	219.7	278.9	5 898.3	4.4	4.7	72.3
August	4 783.6	850.1	5 633.7	217.4	277.1	5 910.7	4.3	4.7	72.4
September	4 789.9	855.3	5 645.2	215.0	275.2	5 920.4	4.3	4.6	72.4
October	4 793.5	860.7	5 654.2	212.9	273.5	5 927.6	4.3	4.6	72.4
FEMALES									
October 2003	2 297.9	1 932.2	4 230.1	177.1	276.4	4 506.5	7.2	6.1	55.6
October 2004	2 401.0	1 965.9	4 366.9	154.1	250.9	4 617.9	6.0	5.4	56.1
2005									
October	2 431.7	2 073.9	4 505.6	150.5	247.7	4 753.3	5.8	5.2	57.1
November	2 433.6	2 072.8	4 506.4	151.7	248.0	4 754.4	5.9	5.2	57.0
December	2 438.9	2 068.8	4 507.7	152.6	248.3	4 756.0	5.9	5.2	57.0
2006									
January	2 447.4	2 063.6	4 511.1	152.8	248.7	4 759.8	5.9	5.2	57.0
February	2 458.0	2 060.1	4 518.0	152.0	248.8	4 766.9	5.8	5.2	57.0
March	2 469.9	2 059.6	4 529.5	150.5	248.4	4 777.8	5.7	5.2	57.1
April	2 483.0	2 062.9	4 546.0	148.6	247.5	4 793.5	5.6	5.2	57.2
May	2 496.8	2 069.4	4 566.2	146.8	245.8	4 811.9	5.6	5.1	57.4
June	2 510.4	2 076.1	4 586.5	145.8	243.4	4 829.9	5.5	5.0	57.5
July	2 522.6	2 081.2	4 603.8	145.6	240.8	4 844.6	5.5	5.0	57.6
August	2 532.4	2 084.7	4 617.2	145.6	237.9	4 855.1	5.4	4.9	57.7
September	2 540.1	2 086.8	4 626.9	145.7	235.2	4 862.1	5.4	4.8	57.7
October	2 544.5	2 088.7	4 633.2	145.8	232.1	4 865.3	5.4	4.8	57.7
PERSONS									
October 2003	6 807.2	2 709.6	9 516.8	436.8	592.4	10 109.1	6.0	5.9	63.4
October 2004	6 987.4	2 776.3	9 763.7	392.3	552.6	10 316.3	5.3	5.4	63.7
2005									
October	7 146.3	2 881.6	10 028.0	384.6	542.9	10 570.9	5.1	5.1	64.5
November	7 146.5	2 881.3	10 027.8	388.1	547.0	10 574.8	5.2	5.2	64.4
December	7 151.8	2 879.9	10 031.7	389.2	549.1	10 580.9	5.2	5.2	64.4
2006									
January	7 162.9	2 879.1	10 042.0	387.9	548.7	10 590.7	5.1	5.2	64.4
February	7 178.5	2 880.9	10 059.4	384.5	545.8	10 605.2	5.1	5.1	64.4
March	7 197.4	2 886.6	10 084.0	379.9	541.0	10 625.0	5.0	5.1	64.4
April	7 220.1	2 895.5	10 115.6	375.2	535.5	10 651.1	4.9	5.0	64.5
May	7 246.1	2 906.5	10 152.5	371.0	529.8	10 682.4	4.9	5.0	64.6
June	7 273.0	2 916.9	10 189.9	367.6	524.4	10 714.3	4.8	4.9	64.8
July	7 297.1	2 926.2	10 223.2	365.3	519.7	10 742.9	4.8	4.8	64.9
August	7 316.0	2 934.8	10 250.8	363.0	515.0	10 765.8	4.7	4.8	64.9
September	7 330.0	2 942.1	10 272.1	360.7	510.4	10 782.5	4.7	4.7	64.9
October	7 337.9	2 949.4	10 287.4	358.7	505.6	10 793.0	4.7	4.7	65.0

LABOUR FORCE STATUS (AGED 15 YEARS & OVER): **Seasonally Adjusted**

	EMPLOYED			UNEMPLOYED		UNEMPLOYMENT RATE			Participation rate
	Full time	Part time	Total	Looking for f/t work	Total	Labour force	Looking for f/t work	Total	
	'000	'000	'000	'000	'000	'000	%	%	
MALES									
October 2003	4 517.0	773.5	5 290.5	268.1	323.5	5 614.0	5.6	5.8	71.7
October 2004	4 588.8	807.0	5 395.8	231.7	299.0	5 694.8	4.8	5.3	71.6
2005									
October	4 692.9	815.8	5 508.7	238.8	300.4	5 809.1	4.8	5.2	72.0
November	4 718.8	803.7	5 522.5	236.6	297.2	5 819.7	4.8	5.1	72.0
December	4 709.6	812.1	5 521.7	232.3	297.7	5 819.4	4.7	5.1	71.9
2006									
January	4 728.3	793.6	5 521.9	235.8	301.4	5 823.3	4.8	5.2	71.9
February	4 720.4	828.2	5 548.5	239.2	304.8	5 853.4	4.8	5.2	72.2
March	4 720.2	845.9	5 566.1	228.7	292.0	5 858.1	4.6	5.0	72.2
April	4 726.7	837.1	5 563.8	218.6	283.7	5 847.5	4.4	4.9	71.9
May	4 755.0	817.2	5 572.2	225.7	279.7	5 851.9	4.5	4.8	71.9
June	4 764.1	841.8	5 605.9	222.3	280.6	5 886.5	4.5	4.8	72.2
July	4 775.6	850.5	5 626.1	222.0	280.6	5 906.7	4.4	4.8	72.4
August	4 787.6	854.0	5 641.6	218.3	279.4	5 921.0	4.4	4.7	72.5
September	4 805.7	846.9	5 652.6	215.0	278.7	5 931.2	4.3	4.7	72.5
October	4 772.7	868.4	5 641.1	208.1	266.5	5 907.6	4.2	4.5	72.1
FEMALES									
October 2003	2 303.3	1 938.8	4 242.1	172.6	272.1	4 514.2	7.0	6.0	55.7
October 2004	2 412.5	1 970.7	4 383.2	155.0	248.7	4 632.0	6.0	5.4	56.3
2005									
October	2 417.9	2 084.7	4 502.6	150.8	253.1	4 755.7	5.9	5.3	57.1
November	2 430.0	2 077.7	4 507.7	147.5	240.5	4 748.1	5.7	5.1	57.0
December	2 438.7	2 075.0	4 513.7	150.3	248.1	4 761.8	5.8	5.2	57.1
2006									
January	2 455.0	2 058.4	4 513.4	160.7	256.2	4 769.6	6.1	5.4	57.1
February	2 466.5	2 046.6	4 513.1	153.9	248.2	4 761.2	5.9	5.2	57.0
March	2 456.9	2 068.9	4 525.8	147.1	238.6	4 764.4	5.6	5.0	56.9
April	2 478.9	2 053.2	4 532.0	146.8	256.7	4 788.8	5.6	5.4	57.2
May	2 499.8	2 072.4	4 572.2	146.2	243.0	4 815.2	5.5	5.0	57.4
June	2 514.4	2 076.0	4 590.4	148.4	247.8	4 838.2	5.6	5.1	57.6
July	2 525.1	2 088.9	4 614.0	142.4	235.2	4 849.1	5.3	4.8	57.7
August	2 532.4	2 085.1	4 617.4	147.3	240.6	4 858.1	5.5	5.0	57.7
September	2 549.1	2 087.3	4 636.4	144.8	234.7	4 871.1	5.4	4.8	57.8
October	2 533.5	2 082.3	4 615.9	146.9	230.6	4 846.5	5.5	4.8	57.4
PERSONS									
October 2003	6 820.3	2 712.3	9 532.6	440.7	595.6	10 128.3	6.1	5.9	63.6
October 2004	7 001.3	2 777.7	9 779.0	386.7	547.7	10 326.7	5.2	5.3	63.8
2005									
October	7 110.8	2 900.5	10 011.3	389.5	553.5	10 564.8	5.2	5.2	64.4
November	7 148.8	2 881.3	10 030.1	384.1	537.7	10 567.8	5.1	5.1	64.4
December	7 148.3	2 887.1	10 035.4	382.6	545.8	10 581.3	5.1	5.2	64.4
2006									
January	7 183.3	2 852.0	10 035.3	396.6	557.6	10 592.9	5.2	5.3	64.4
February	7 186.9	2 874.7	10 061.6	393.2	553.0	10 614.6	5.2	5.2	64.4
March	7 177.1	2 914.8	10 091.9	375.8	530.6	10 622.5	5.0	5.0	64.4
April	7 205.6	2 890.3	10 095.8	365.3	540.4	10 636.3	4.8	5.1	64.4
May	7 254.8	2 889.6	10 144.4	371.9	522.7	10 667.1	4.9	4.9	64.6
June	7 278.5	2 917.8	10 196.3	370.7	528.4	10 724.7	4.8	4.9	64.8
July	7 300.7	2 939.4	10 240.1	364.3	515.8	10 755.9	4.8	4.8	64.9
August	7 319.9	2 939.1	10 259.0	365.6	520.0	10 779.1	4.8	4.8	65.0
September	7 354.8	2 934.2	10 289.0	359.8	513.4	10 802.3	4.7	4.8	65.1
October	7 306.2	2 950.8	10 256.9	355.0	497.2	10 754.1	4.6	4.6	64.7

# LABOUR FORCE STATUS (AGED 15 YEARS & OVER): Original

	EMPLOYED			UNEMPLOYED			Civilian population aged 15 years and over	UNEMPLOYMENT RATE		Participation rate	
	Full time	Part time	Total	Looking for f/t work	Total	Labour force		Not in labour force	Looking for f/t work		Total
	'000	'000	'000	'000	'000	'000		'000	%		%
MALES											
October 2003	4 513.5	790.2	5 303.6	253.9	304.3	5 608.0	2 220.0	7 828.0	5.3	5.4	71.6
October 2004	4 582.3	827.3	5 409.6	219.3	280.5	5 690.1	2 269.1	7 959.1	4.6	4.9	71.5
2005											
October	4 683.7	838.6	5 522.3	225.4	281.4	5 803.7	2 265.5	8 069.2	4.6	4.8	71.9
November	4 706.2	793.2	5 499.4	224.6	276.2	5 775.6	2 304.4	8 080.0	4.6	4.8	71.5
December	4 781.1	810.6	5 591.7	226.5	294.6	5 886.3	2 204.4	8 090.8	4.5	5.0	72.8
2006											
January	4 720.7	757.5	5 478.1	265.2	336.1	5 814.2	2 286.0	8 100.2	5.3	5.8	71.8
February	4 745.2	795.3	5 540.5	264.5	338.9	5 879.4	2 230.5	8 109.9	5.3	5.8	72.5
March	4 721.1	855.5	5 576.6	229.7	301.7	5 878.4	2 241.0	8 119.4	4.6	5.1	72.4
April	4 714.7	856.4	5 571.1	220.5	291.5	5 862.6	2 266.4	8 129.1	4.5	5.0	72.1
May	4 742.2	823.9	5 566.2	227.5	282.9	5 849.1	2 289.8	8 138.8	4.6	4.8	71.9
June	4 736.0	865.2	5 601.3	220.1	273.2	5 874.5	2 274.0	8 148.5	4.4	4.7	72.1
July	4 777.5	855.1	5 632.6	205.5	255.6	5 888.2	2 270.4	8 158.6	4.1	4.3	72.2
August	4 733.9	855.9	5 589.8	208.7	262.7	5 852.5	2 316.1	8 168.6	4.2	4.5	71.6
September	4 832.8	841.0	5 673.9	216.1	284.8	5 958.6	2 220.0	8 178.6	4.3	4.8	72.9
October	4 761.6	893.8	5 655.4	196.6	249.7	5 905.1	2 289.4	8 194.5	4.0	4.2	72.1
FEMALES											
October 2003	2 296.2	1 952.3	4 248.5	159.1	253.8	4 502.3	3 603.2	8 105.5	6.5	5.6	55.5
October 2004	2 400.7	1 988.5	4 389.3	141.7	230.5	4 619.7	3 611.1	8 230.8	5.6	5.0	56.1
2005											
October	2 403.7	2 105.9	4 509.6	137.0	233.0	4 742.7	3 583.4	8 326.0	5.4	4.9	57.0
November	2 433.7	2 083.8	4 517.6	136.3	219.3	4 736.8	3 597.9	8 334.8	5.3	4.6	56.8
December	2 498.3	2 069.5	4 567.8	150.7	247.1	4 814.9	3 528.4	8 343.3	5.7	5.1	57.7
2006											
January	2 475.4	1 966.5	4 441.9	180.3	273.3	4 715.3	3 636.3	8 351.6	6.8	5.8	56.5
February	2 498.1	1 993.9	4 492.0	181.2	289.1	4 781.1	3 578.7	8 359.9	6.8	6.0	57.2
March	2 437.0	2 099.1	4 536.2	155.1	259.7	4 795.9	3 572.2	8 368.1	6.0	5.4	57.3
April	2 450.2	2 069.0	4 519.2	148.1	257.8	4 776.9	3 600.2	8 377.1	5.7	5.4	57.0
May	2 464.7	2 111.4	4 576.1	143.8	240.9	4 817.0	3 569.0	8 386.0	5.5	5.0	57.4
June	2 486.8	2 109.7	4 596.5	146.5	241.9	4 838.4	3 556.6	8 395.0	5.6	5.0	57.6
July	2 524.6	2 081.8	4 606.3	131.8	216.2	4 822.5	3 581.9	8 404.5	5.0	4.5	57.4
August	2 481.8	2 100.3	4 582.1	135.5	229.8	4 812.0	3 602.0	8 413.9	5.2	4.8	57.2
September	2 603.2	2 083.5	4 686.7	142.2	235.8	4 922.6	3 500.9	8 423.4	5.2	4.8	58.4
October	2 517.3	2 104.9	4 622.2	133.7	212.0	4 834.2	3 602.5	8 436.6	5.0	4.4	57.3
PERSONS											
October 2003	6 809.7	2 742.5	9 552.2	412.9	558.1	10 110.3	5 823.2	15 933.5	5.7	5.5	63.5
October 2004	6 983.0	2 815.8	9 798.8	361.0	511.0	10 309.8	5 880.2	16 190.0	4.9	5.0	63.7
2005											
October	7 087.4	2 944.5	10 031.9	362.4	514.5	10 546.4	5 848.9	16 395.3	4.9	4.9	64.3
November	7 139.9	2 877.1	10 017.0	360.8	495.5	10 512.4	5 902.4	16 414.8	4.8	4.7	64.0
December	7 279.5	2 880.1	10 159.5	377.2	541.7	10 701.2	5 732.8	16 434.1	4.9	5.1	65.1
2006											
January	7 196.1	2 724.0	9 920.1	445.5	609.4	10 529.5	5 922.3	16 451.8	5.8	5.8	64.0
February	7 243.3	2 789.2	10 032.5	445.7	628.1	10 660.6	5 809.2	16 469.8	5.8	5.9	64.7
March	7 158.1	2 954.6	10 112.8	384.8	561.5	10 674.2	5 813.3	16 487.5	5.1	5.3	64.7
April	7 164.9	2 925.4	10 090.3	368.6	549.3	10 639.5	5 866.6	16 506.2	4.9	5.2	64.5
May	7 206.9	2 935.3	10 142.2	371.3	523.8	10 666.1	5 858.8	16 524.9	4.9	4.9	64.5
June	7 222.8	2 975.0	10 197.8	366.6	515.1	10 712.9	5 830.7	16 543.5	4.8	4.8	64.8
July	7 302.0	2 936.9	10 239.0	337.4	471.7	10 710.7	5 852.3	16 563.0	4.4	4.4	64.7
August	7 215.7	2 956.3	10 172.0	344.2	492.5	10 664.5	5 918.1	16 582.6	4.6	4.6	64.3
September	7 436.1	2 924.5	10 360.6	358.2	520.6	10 881.2	5 720.9	16 602.1	4.6	4.8	65.5
October	7 278.9	2 998.7	10 277.6	330.3	461.7	10 739.3	5 891.9	16 631.1	4.3	4.3	64.6



LABOUR FORCE STATUS (AGED 15 YEARS & OVER)—New South Wales

	TREND					SEASONALLY ADJUSTED					Civilian population aged 15 years and over '000
	Employed full time	Total employed	Total unemployed	Unemployment rate	Participation rate	Employed full time	Total employed	Total unemployed	Unemployment rate	Participation rate	
	'000	'000	'000	%	%	'000	'000	'000	%	%	
MALES											
October 2003	1 517.2	1 762.6	100.3	5.4	70.7	1 522.5	1 775.8	102.6	5.5	71.3	2 634.6
October 2004	1 507.3	1 777.3	95.3	5.1	70.1	1 503.4	1 771.2	91.3	4.9	69.9	2 665.5
2005											
October	1 530.2	1 789.0	107.6	5.7	70.5	1 521.1	1 786.6	110.6	5.8	70.5	2 689.8
November	1 530.4	1 789.7	109.8	5.8	70.6	1 528.3	1 789.3	108.5	5.7	70.5	2 692.0
December	1 532.6	1 791.7	110.2	5.8	70.6	1 526.2	1 790.3	110.1	5.8	70.5	2 694.2
2006											
January	1 536.1	1 794.9	109.2	5.7	70.6	1 552.7	1 793.3	112.8	5.9	70.7	2 696.3
February	1 539.7	1 798.9	107.3	5.6	70.6	1 538.3	1 801.7	107.6	5.6	70.8	2 698.3
March	1 542.8	1 803.6	105.6	5.5	70.7	1 537.3	1 804.2	99.7	5.2	70.5	2 700.4
April	1 544.4	1 808.0	104.5	5.5	70.8	1 537.2	1 807.2	106.5	5.6	70.8	2 702.5
May	1 544.1	1 812.0	104.2	5.4	70.9	1 555.2	1 813.7	104.6	5.5	70.9	2 704.5
June	1 542.3	1 815.6	104.6	5.4	70.9	1 541.9	1 811.0	104.0	5.4	70.8	2 706.6
July	1 539.7	1 818.7	105.5	5.5	71.0	1 543.6	1 825.4	103.2	5.4	71.2	2 708.8
August	1 536.1	1 821.7	106.2	5.5	71.1	1 533.3	1 820.1	108.7	5.6	71.1	2 711.1
September	1 532.2	1 824.3	106.8	5.5	71.2	1 528.0	1 821.6	108.1	5.6	71.1	2 713.3
October	1 528.5	1 826.4	106.9	5.5	71.2	1 527.0	1 828.8	105.6	5.5	71.2	2 717.1
FEMALES											
October 2003	788.9	1 397.3	88.3	5.9	54.6	788.5	1 400.6	88.1	5.9	54.7	2 722.8
October 2004	811.6	1 417.8	80.5	5.4	54.4	815.4	1 420.7	83.9	5.6	54.7	2 752.9
2005											
October	812.5	1 466.4	74.5	4.8	55.5	802.6	1 459.1	76.4	5.0	55.3	2 775.2
November	816.1	1 465.7	75.5	4.9	55.5	819.0	1 466.3	73.3	4.8	55.4	2 777.2
December	819.0	1 463.9	76.5	5.0	55.4	827.4	1 469.2	77.1	5.0	55.6	2 779.0
2006											
January	821.1	1 462.1	77.5	5.0	55.4	821.1	1 466.1	82.6	5.3	55.7	2 780.9
February	821.8	1 460.9	78.3	5.1	55.3	824.1	1 462.2	73.3	4.8	55.2	2 782.9
March	821.6	1 460.2	79.0	5.1	55.3	814.1	1 456.4	75.3	4.9	55.0	2 784.8
April	821.2	1 460.5	79.8	5.2	55.3	819.8	1 439.9	88.1	5.8	54.8	2 787.0
May	821.6	1 462.4	80.7	5.2	55.3	826.2	1 480.7	75.6	4.9	55.8	2 789.2
June	823.5	1 465.4	81.2	5.3	55.4	826.7	1 472.5	85.7	5.5	55.8	2 791.4
July	826.1	1 468.5	81.4	5.2	55.5	818.8	1 460.3	72.9	4.8	54.9	2 793.9
August	828.9	1 471.0	80.9	5.2	55.5	827.8	1 467.2	88.7	5.7	55.6	2 796.4
September	832.0	1 473.2	80.2	5.2	55.5	833.4	1 475.8	83.1	5.3	55.7	2 798.9
October	834.6	1 475.3	78.9	5.1	55.5	839.8	1 477.0	72.6	4.7	55.3	2 802.1
PERSONS											
October 2003	2 306.1	3 159.9	188.6	5.6	62.5	2 311.0	3 176.4	190.7	5.7	62.8	5 357.5
October 2004	2 318.9	3 195.0	175.8	5.2	62.1	2 318.9	3 192.0	175.2	5.2	62.1	5 418.4
2005											
October	2 342.8	3 255.4	182.1	5.3	62.9	2 323.7	3 245.7	187.1	5.4	62.8	5 465.0
November	2 346.5	3 255.4	185.2	5.4	62.9	2 347.2	3 255.6	181.8	5.3	62.9	5 469.2
December	2 351.7	3 255.6	186.7	5.4	62.9	2 353.6	3 259.5	187.2	5.4	63.0	5 473.3
2006											
January	2 357.2	3 257.0	186.7	5.4	62.9	2 373.8	3 259.4	195.4	5.7	63.1	5 477.2
February	2 361.5	3 259.8	185.7	5.4	62.9	2 362.5	3 263.9	180.9	5.3	62.8	5 481.2
March	2 364.4	3 263.8	184.6	5.4	62.9	2 351.4	3 260.5	175.0	5.1	62.6	5 485.1
April	2 365.6	3 268.5	184.3	5.3	62.9	2 357.0	3 247.1	194.5	5.7	62.7	5 489.4
May	2 365.7	3 274.4	184.8	5.3	63.0	2 381.4	3 294.4	180.2	5.2	63.2	5 493.7
June	2 365.9	3 281.0	185.9	5.4	63.1	2 368.6	3 283.4	189.7	5.5	63.2	5 498.0
July	2 365.7	3 287.2	186.8	5.4	63.1	2 362.4	3 285.7	176.2	5.1	62.9	5 502.7
August	2 365.0	3 292.7	187.1	5.4	63.2	2 361.1	3 287.2	197.4	5.7	63.3	5 507.4
September	2 364.2	3 297.5	187.0	5.4	63.2	2 361.4	3 297.5	191.2	5.5	63.3	5 512.2
October	2 363.1	3 301.7	185.8	5.3	63.2	2 366.9	3 305.8	178.3	5.1	63.1	5 519.3

LABOUR FORCE STATUS (AGED 15 YEARS & OVER)—Victoria

	TREND					SEASONALLY ADJUSTED					Civilian population aged 15 years and over
	Employed full time	Total employed	Total unemployed	Unemployment rate	Participation rate	Employed full time	Total employed	Total unemployed	Unemployment rate	Participation rate	
	'000	'000	'000	%	%	'000	'000	'000	%	%	
MALES											
October 2003	1 109.9	1 313.6	71.7	5.2	71.5	1 119.8	1 313.3	70.4	5.1	71.4	1 936.6
October 2004	1 137.7	1 339.7	83.3	5.9	72.3	1 135.6	1 339.2	84.0	5.9	72.3	1 969.5
2005											
October	1 166.2	1 370.2	73.1	5.1	72.3	1 167.6	1 371.4	73.7	5.1	72.4	1 996.2
November	1 162.5	1 366.5	74.0	5.1	72.1	1 166.9	1 367.1	76.1	5.3	72.2	1 998.5
December	1 159.1	1 364.4	74.5	5.2	71.9	1 157.0	1 360.6	74.9	5.2	71.7	2 000.8
2006											
January	1 156.8	1 364.9	74.2	5.2	71.9	1 150.8	1 360.5	70.1	4.9	71.4	2 002.9
February	1 156.5	1 367.9	73.5	5.1	71.9	1 155.7	1 371.7	75.4	5.2	72.2	2 005.0
March	1 158.0	1 372.5	72.8	5.0	72.0	1 161.5	1 372.5	75.4	5.2	72.1	2 007.1
April	1 161.5	1 378.3	72.1	5.0	72.2	1 161.4	1 380.3	70.7	4.9	72.2	2 009.3
May	1 166.8	1 384.7	71.4	4.9	72.4	1 165.7	1 379.7	69.2	4.8	72.0	2 011.5
June	1 172.4	1 390.8	70.6	4.8	72.6	1 169.2	1 394.6	70.2	4.8	72.7	2 013.8
July	1 177.6	1 396.0	69.9	4.8	72.7	1 179.5	1 394.1	73.9	5.0	72.8	2 016.2
August	1 182.1	1 400.5	69.2	4.7	72.8	1 181.4	1 403.4	67.5	4.6	72.9	2 018.6
September	1 185.7	1 404.1	68.7	4.7	72.9	1 198.8	1 409.9	67.1	4.5	73.1	2 021.0
October	1 188.3	1 406.4	68.4	4.6	72.9	1 177.7	1 399.8	69.1	4.7	72.5	2 024.9
FEMALES											
October 2003	562.2	1 048.8	65.5	5.9	54.8	560.7	1 047.2	67.7	6.1	54.8	2 035.0
October 2004	586.5	1 094.7	69.2	5.9	56.3	581.5	1 093.7	66.8	5.8	56.2	2 066.8
2005											
October	595.2	1 112.7	70.1	5.9	56.6	601.0	1 121.1	69.5	5.8	57.0	2 089.6
November	596.5	1 117.5	69.1	5.8	56.7	594.0	1 117.3	66.8	5.6	56.6	2 091.8
December	598.2	1 121.9	68.1	5.7	56.8	592.4	1 121.9	66.8	5.6	56.8	2 093.9
2006											
January	599.8	1 124.7	67.2	5.6	56.9	600.9	1 123.4	70.8	5.9	57.0	2 095.9
February	601.2	1 126.7	66.8	5.6	56.9	606.8	1 129.2	66.0	5.5	57.0	2 097.8
March	602.2	1 128.9	66.6	5.6	56.9	601.3	1 129.0	62.5	5.2	56.7	2 099.8
April	603.6	1 131.7	65.9	5.5	57.0	605.0	1 129.9	69.5	5.8	57.1	2 102.1
May	605.3	1 135.2	64.5	5.4	57.0	600.1	1 133.0	63.8	5.3	56.9	2 104.4
June	607.1	1 138.8	62.6	5.2	57.0	607.7	1 137.1	64.7	5.4	57.0	2 106.7
July	609.2	1 142.3	60.6	5.0	57.0	607.9	1 146.3	61.7	5.1	57.3	2 109.0
August	611.0	1 145.3	58.5	4.9	57.0	611.3	1 147.9	55.5	4.6	57.0	2 111.3
September	612.3	1 147.6	56.8	4.7	57.0	624.6	1 147.1	54.0	4.5	56.8	2 113.6
October	612.8	1 149.1	55.2	4.6	56.9	601.8	1 146.3	58.2	4.8	56.9	2 116.9
PERSONS											
October 2003	1 672.1	2 362.4	137.2	5.5	62.9	1 680.5	2 360.4	138.1	5.5	62.9	3 971.5
October 2004	1 724.2	2 434.4	152.5	5.9	64.1	1 717.1	2 432.9	150.8	5.8	64.0	4 036.3
2005											
October	1 761.4	2 482.9	143.2	5.5	64.3	1 768.6	2 492.4	143.3	5.4	64.5	4 085.8
November	1 759.0	2 484.0	143.1	5.4	64.2	1 761.0	2 484.4	142.9	5.4	64.2	4 090.3
December	1 757.3	2 486.3	142.5	5.4	64.2	1 749.4	2 482.4	141.7	5.4	64.1	4 094.7
2006											
January	1 756.6	2 489.7	141.4	5.4	64.2	1 751.7	2 483.9	141.0	5.4	64.0	4 098.8
February	1 757.7	2 494.6	140.3	5.3	64.2	1 762.5	2 500.8	141.4	5.4	64.4	4 102.8
March	1 760.2	2 501.4	139.3	5.3	64.3	1 762.8	2 501.5	137.9	5.2	64.3	4 106.9
April	1 765.1	2 510.0	138.0	5.2	64.4	1 766.4	2 510.3	140.2	5.3	64.5	4 111.4
May	1 772.0	2 519.9	135.9	5.1	64.5	1 765.7	2 512.8	133.0	5.0	64.3	4 115.9
June	1 779.5	2 529.6	133.2	5.0	64.6	1 776.9	2 531.6	134.9	5.1	64.7	4 120.5
July	1 786.8	2 538.3	130.4	4.9	64.7	1 787.4	2 540.4	135.7	5.1	64.9	4 125.2
August	1 793.2	2 545.8	127.8	4.8	64.7	1 792.7	2 551.3	123.0	4.6	64.8	4 129.9
September	1 798.0	2 551.7	125.5	4.7	64.8	1 823.4	2 557.0	121.1	4.5	64.8	4 134.6
October	1 801.1	2 555.6	123.6	4.6	64.7	1 779.5	2 546.1	127.3	4.8	64.5	4 141.8

	TREND					SEASONALLY ADJUSTED					Civilian population aged 15 years and over '000
	Employed full time	Total employed	Total unemployed	Unemployment rate	Participation rate	Employed full time	Total employed	Total unemployed	Unemployment rate	Participation rate	
	'000	'000	'000	%	%	'000	'000	'000	%	%	
MALES											
October 2003	860.6	1 009.0	66.3	6.2	72.2	858.8	1 009.0	72.3	6.7	72.6	1 489.7
October 2004	908.8	1 061.8	54.5	4.9	73.0	919.8	1 067.5	52.2	4.7	73.2	1 529.7
2005											
October	946.3	1 099.4	52.1	4.5	73.6	947.9	1 098.3	52.1	4.5	73.5	1 564.9
November	945.8	1 099.3	53.5	4.6	73.5	948.6	1 098.5	51.9	4.5	73.3	1 568.7
December	944.8	1 099.2	54.4	4.7	73.4	943.1	1 100.1	53.1	4.6	73.3	1 572.5
2006											
January	944.0	1 099.7	54.6	4.7	73.3	944.7	1 098.8	57.6	5.0	73.4	1 575.6
February	943.9	1 100.9	54.2	4.7	73.2	944.0	1 101.0	56.1	4.9	73.3	1 579.0
March	945.0	1 103.3	52.8	4.6	73.1	943.9	1 104.9	53.8	4.6	73.2	1 582.1
April	947.6	1 106.8	51.0	4.4	73.0	942.8	1 104.3	46.4	4.0	72.6	1 585.1
May	951.6	1 111.1	49.4	4.3	73.1	952.8	1 106.9	51.7	4.5	72.9	1 588.3
June	956.3	1 115.8	48.4	4.2	73.2	961.6	1 120.1	47.5	4.1	73.4	1 591.3
July	960.9	1 120.2	47.8	4.1	73.3	956.0	1 121.3	46.0	3.9	73.2	1 594.2
August	964.9	1 124.1	47.5	4.1	73.3	966.4	1 125.6	46.0	3.9	73.4	1 597.2
September	968.4	1 127.2	47.0	4.0	73.4	971.6	1 126.2	55.1	4.7	73.8	1 600.1
October	971.1	1 129.7	46.7	4.0	73.4	969.2	1 129.0	40.9	3.5	72.9	1 604.7
FEMALES											
October 2003	442.1	824.4	58.7	6.6	57.6	438.0	827.6	54.5	6.2	57.6	1 532.0
October 2004	485.1	865.2	47.6	5.2	58.1	486.9	875.4	42.5	4.6	58.5	1 570.0
2005											
October	486.0	896.4	52.6	5.5	59.3	483.5	895.5	53.1	5.6	59.3	1 600.6
November	484.1	895.5	52.2	5.5	59.1	483.4	896.5	49.6	5.2	59.0	1 603.4
December	483.6	895.6	52.1	5.5	59.0	481.3	892.4	50.5	5.4	58.7	1 606.1
2006											
January	485.4	897.0	52.3	5.5	59.0	486.2	896.6	53.7	5.7	59.1	1 608.8
February	489.3	899.9	52.6	5.5	59.1	493.1	897.7	55.1	5.8	59.1	1 611.4
March	495.0	904.1	52.8	5.5	59.3	487.0	909.5	52.0	5.4	59.6	1 614.1
April	502.1	910.2	52.8	5.5	59.6	503.5	907.4	51.3	5.4	59.3	1 616.6
May	509.6	917.7	52.4	5.4	59.9	511.6	917.5	53.4	5.5	60.0	1 619.1
June	516.7	925.8	51.7	5.3	60.3	518.6	920.7	51.0	5.3	59.9	1 621.6
July	522.8	933.6	50.9	5.2	60.6	522.7	935.3	51.4	5.2	60.7	1 624.3
August	527.7	940.6	50.0	5.0	60.9	528.9	944.4	51.6	5.2	61.2	1 627.0
September	531.6	946.2	48.9	4.9	61.1	534.4	955.7	48.9	4.9	61.6	1 629.7
October	533.6	950.7	47.7	4.8	61.2	529.7	941.4	44.9	4.6	60.4	1 633.4
PERSONS											
October 2003	1 302.8	1 833.4	125.0	6.4	64.8	1 296.8	1 836.6	126.8	6.5	65.0	3 021.6
October 2004	1 393.8	1 927.0	102.1	5.0	65.5	1 406.7	1 942.9	94.8	4.7	65.7	3 099.7
2005											
October	1 432.4	1 995.8	104.8	5.0	66.4	1 431.5	1 993.8	105.2	5.0	66.3	3 165.5
November	1 429.9	1 994.8	105.7	5.0	66.2	1 431.9	1 995.0	101.5	4.8	66.1	3 172.1
December	1 428.4	1 994.8	106.5	5.1	66.1	1 424.4	1 992.5	103.7	4.9	65.9	3 178.6
2006											
January	1 429.4	1 996.7	106.9	5.1	66.1	1 430.9	1 995.4	111.3	5.3	66.2	3 184.4
February	1 433.2	2 000.8	106.8	5.1	66.1	1 437.1	1 998.7	111.3	5.3	66.1	3 190.4
March	1 439.9	2 007.4	105.6	5.0	66.1	1 430.8	2 014.5	105.8	5.0	66.3	3 196.2
April	1 449.6	2 017.0	103.8	4.9	66.2	1 446.3	2 011.7	97.7	4.6	65.9	3 201.7
May	1 461.2	2 028.8	101.8	4.8	66.4	1 464.4	2 024.5	105.1	4.9	66.4	3 207.4
June	1 473.0	2 041.6	100.1	4.7	66.7	1 480.3	2 040.8	98.5	4.6	66.6	3 212.9
July	1 483.7	2 053.8	98.8	4.6	66.9	1 478.7	2 056.6	97.4	4.5	66.9	3 218.6
August	1 492.6	2 064.6	97.4	4.5	67.0	1 495.3	2 070.0	97.5	4.5	67.2	3 224.2
September	1 499.9	2 073.5	95.9	4.4	67.2	1 506.0	2 081.9	104.0	4.8	67.7	3 229.8
October	1 504.7	2 080.4	94.5	4.3	67.2	1 498.9	2 070.4	85.9	4.0	66.6	3 238.1

LABOUR FORCE STATUS (AGED 15 YEARS & OVER)—South Australia

	TREND					SEASONALLY ADJUSTED					Civilian population aged 15 years and over
	Employed full time	Total employed	Total unemployed	Unemployment rate	Participation rate	Employed full time	Total employed	Total unemployed	Unemployment rate	Participation rate	
	'000	'000	'000	%	%	'000	'000	'000	%	%	
MALES											
October 2003	335.8	396.4	26.8	6.3	69.6	335.3	393.8	27.2	6.5	69.2	608.2
October 2004	335.7	400.8	25.2	5.9	69.4	337.7	403.3	25.3	5.9	69.8	614.1
2005											
October	342.4	404.6	23.1	5.4	69.1	341.7	403.8	24.8	5.8	69.2	619.0
November	342.3	404.7	23.0	5.4	69.0	341.0	404.5	22.6	5.3	68.9	619.6
December	342.0	404.9	23.2	5.4	69.0	344.2	405.4	20.8	4.9	68.7	620.2
2006											
January	341.5	405.1	23.5	5.5	69.1	341.1	402.3	23.7	5.6	68.6	620.6
February	341.0	405.3	23.8	5.6	69.1	341.2	409.8	22.8	5.3	69.7	621.1
March	340.6	405.7	24.0	5.6	69.1	339.8	405.2	26.4	6.1	69.4	621.6
April	340.6	406.4	23.7	5.5	69.1	341.4	404.5	24.6	5.7	69.0	622.1
May	341.4	407.5	23.0	5.3	69.1	340.7	407.1	22.9	5.3	69.1	622.6
June	343.1	409.1	21.8	5.1	69.2	341.8	408.7	20.2	4.7	68.8	623.1
July	345.4	411.0	20.7	4.8	69.2	344.8	411.7	20.8	4.8	69.4	623.5
August	347.7	412.9	19.8	4.6	69.4	345.6	413.3	20.2	4.7	69.5	623.8
September	350.0	414.8	19.0	4.4	69.5	356.2	414.6	19.3	4.5	69.5	624.2
October	351.8	416.3	18.5	4.2	69.6	350.2	417.2	17.9	4.1	69.6	625.0
FEMALES											
October 2003	160.5	320.7	22.5	6.5	54.3	160.4	322.0	21.4	6.2	54.3	632.6
October 2004	163.9	324.1	18.4	5.4	53.7	164.5	323.1	19.2	5.6	53.7	637.5
2005											
October	169.0	337.1	15.6	4.4	55.0	163.0	334.6	15.2	4.4	54.6	641.0
November	169.8	337.6	16.1	4.6	55.1	171.7	338.4	15.2	4.3	55.1	641.5
December	170.9	338.1	16.7	4.7	55.3	171.0	339.5	19.2	5.3	55.9	642.0
2006											
January	172.0	338.5	17.1	4.8	55.3	174.5	340.1	15.3	4.3	55.3	642.5
February	172.7	338.6	17.3	4.8	55.4	172.2	338.0	18.3	5.1	55.4	642.9
March	173.1	338.6	17.4	4.9	55.3	173.1	336.5	16.7	4.7	54.9	643.3
April	173.3	338.7	17.4	4.9	55.3	171.9	340.0	17.9	5.0	55.6	643.8
May	173.4	339.1	17.5	4.9	55.3	172.9	338.2	17.5	4.9	55.2	644.3
June	173.6	339.9	17.7	4.9	55.5	174.6	340.8	16.7	4.7	55.4	644.7
July	173.7	340.9	17.9	5.0	55.6	173.4	340.7	18.6	5.2	55.7	645.2
August	173.5	341.9	18.1	5.0	55.8	175.9	340.9	18.0	5.0	55.6	645.6
September	173.1	342.8	18.4	5.1	55.9	172.0	343.3	18.4	5.1	56.0	646.1
October	172.6	343.5	18.6	5.1	56.0	170.7	344.6	18.9	5.2	56.2	646.8
PERSONS											
October 2003	496.3	717.1	49.3	6.4	61.8	495.7	715.8	48.6	6.4	61.6	1 240.7
October 2004	499.5	725.0	43.7	5.7	61.4	502.2	726.4	44.5	5.8	61.6	1 251.6
2005											
October	511.4	741.7	38.6	5.0	61.9	504.7	738.5	40.0	5.1	61.8	1 260.0
November	512.1	742.3	39.1	5.0	62.0	512.7	742.9	37.8	4.8	61.9	1 261.1
December	512.9	743.0	39.8	5.1	62.0	515.3	744.9	40.0	5.1	62.2	1 262.2
2006											
January	513.5	743.6	40.5	5.2	62.1	515.7	742.5	39.0	5.0	61.9	1 263.1
February	513.7	744.0	41.1	5.2	62.1	513.4	747.8	41.1	5.2	62.4	1 264.0
March	513.7	744.4	41.3	5.3	62.1	512.9	741.7	43.0	5.5	62.0	1 264.9
April	513.9	745.1	41.1	5.2	62.1	513.3	744.5	42.5	5.4	62.2	1 265.9
May	514.8	746.6	40.4	5.1	62.1	513.6	745.3	40.4	5.1	62.0	1 266.8
June	516.8	749.0	39.5	5.0	62.2	516.4	749.5	36.8	4.7	62.0	1 267.8
July	519.1	751.9	38.6	4.9	62.3	518.3	752.4	39.4	5.0	62.4	1 268.6
August	521.2	754.8	38.0	4.8	62.4	521.6	754.2	38.2	4.8	62.4	1 269.5
September	523.0	757.6	37.4	4.7	62.6	528.2	757.9	37.7	4.7	62.6	1 270.3
October	524.4	759.9	37.1	4.6	62.7	521.0	761.8	36.8	4.6	62.8	1 271.8

	TREND					SEASONALLY ADJUSTED					Civilian population aged 15 years and over
	Employed full time	Total employed	Total unemployed	Unemployment rate	Participation rate	Employed full time	Total employed	Total unemployed	Unemployment rate	Participation rate	
	'000	'000	'000	%	%	'000	'000	'000	%	%	
MALES											
October 2003	470.7	547.7	34.1	5.9	75.1	470.8	545.1	34.1	5.9	74.7	775.2
October 2004	477.0	559.4	25.5	4.4	73.9	479.9	564.8	27.4	4.6	74.8	792.0
2005											
October	506.0	591.6	24.0	3.9	76.4	503.3	591.4	22.8	3.7	76.2	806.0
November	506.8	592.6	23.7	3.8	76.3	504.2	590.4	22.6	3.7	75.9	807.3
December	507.9	593.8	23.7	3.8	76.4	507.3	594.0	24.9	4.0	76.5	808.7
2006											
January	509.3	594.9	23.7	3.8	76.4	508.6	593.2	24.2	3.9	76.2	810.0
February	511.1	596.2	23.3	3.8	76.3	513.3	595.1	24.2	3.9	76.3	811.3
March	513.0	597.3	22.4	3.6	76.3	516.2	603.1	21.9	3.5	76.9	812.7
April	514.7	598.3	21.2	3.4	76.1	513.6	597.9	21.6	3.5	76.1	814.1
May	516.4	599.3	19.9	3.2	75.9	512.8	596.3	18.9	3.1	75.4	815.4
June	518.4	600.4	19.0	3.1	75.8	516.2	598.1	19.7	3.2	75.6	816.8
July	520.7	601.7	18.4	3.0	75.8	524.6	603.8	17.0	2.7	75.9	818.4
August	522.9	603.2	18.0	2.9	75.8	524.0	604.1	18.2	2.9	75.9	820.0
September	524.8	604.5	17.8	2.9	75.7	524.9	605.6	18.3	2.9	75.9	821.6
October	526.4	605.9	17.7	2.8	75.8	525.3	605.0	18.0	2.9	75.6	823.7
FEMALES											
October 2003	216.4	417.5	29.7	6.6	56.9	219.9	419.3	29.0	6.5	57.0	786.6
October 2004	226.0	438.5	23.8	5.1	57.6	228.7	443.2	23.5	5.0	58.1	803.1
2005											
October	237.0	463.0	21.8	4.5	59.5	231.4	463.2	20.8	4.3	59.4	815.3
November	236.9	463.2	21.6	4.4	59.4	233.4	462.2	21.9	4.5	59.3	816.2
December	237.3	463.4	21.6	4.4	59.4	237.4	462.1	22.2	4.6	59.3	817.1
2006											
January	237.8	463.8	21.7	4.5	59.3	243.6	467.9	20.4	4.2	59.7	818.0
February	238.4	464.4	21.6	4.4	59.3	240.0	462.5	22.0	4.5	59.2	818.9
March	239.0	465.5	21.2	4.4	59.4	238.1	464.3	22.9	4.7	59.4	819.9
April	239.9	466.8	20.6	4.2	59.4	235.7	466.2	20.3	4.2	59.3	820.9
May	240.8	468.3	20.0	4.1	59.4	238.1	468.0	19.4	4.0	59.3	822.0
June	241.9	469.4	19.8	4.0	59.4	241.2	470.0	20.0	4.1	59.5	823.1
July	242.6	470.0	19.9	4.1	59.4	253.4	473.5	17.4	3.5	59.5	824.3
August	242.6	469.9	20.4	4.2	59.4	239.5	468.7	21.8	4.4	59.4	825.6
September	241.8	469.4	21.0	4.3	59.3	241.4	471.1	21.3	4.3	59.6	826.8
October	240.8	468.6	21.8	4.4	59.2	235.9	464.4	22.8	4.7	58.8	828.5
PERSONS											
October 2003	687.1	965.2	63.8	6.2	65.9	690.7	964.5	63.1	6.1	65.8	1 561.7
October 2004	703.0	997.9	49.3	4.7	65.7	708.5	1 008.0	50.8	4.8	66.4	1 595.1
2005											
October	743.0	1 054.6	45.8	4.2	67.9	734.6	1 054.6	43.6	4.0	67.7	1 621.2
November	743.6	1 055.8	45.3	4.1	67.8	737.6	1 052.6	44.5	4.1	67.6	1 623.5
December	745.1	1 057.2	45.3	4.1	67.8	744.8	1 056.1	47.1	4.3	67.9	1 625.8
2006											
January	747.1	1 058.7	45.3	4.1	67.8	752.2	1 061.1	44.6	4.0	67.9	1 628.0
February	749.6	1 060.6	44.9	4.1	67.8	753.3	1 057.6	46.2	4.2	67.7	1 630.3
March	752.0	1 062.8	43.6	3.9	67.8	754.4	1 067.5	44.7	4.0	68.1	1 632.5
April	754.5	1 065.2	41.7	3.8	67.7	749.3	1 064.1	41.9	3.8	67.6	1 635.0
May	757.2	1 067.6	40.0	3.6	67.6	751.0	1 064.3	38.4	3.5	67.3	1 637.4
June	760.4	1 069.8	38.8	3.5	67.6	757.4	1 068.0	39.7	3.6	67.5	1 639.9
July	763.3	1 071.8	38.4	3.5	67.6	778.0	1 077.3	34.4	3.1	67.7	1 642.8
August	765.5	1 073.2	38.4	3.5	67.5	763.5	1 072.8	39.9	3.6	67.6	1 645.6
September	766.6	1 073.9	38.8	3.5	67.5	766.3	1 076.7	39.6	3.5	67.7	1 648.5
October	767.2	1 074.5	39.4	3.5	67.5	761.1	1 069.4	40.9	3.7	67.2	1 652.2

LABOUR FORCE STATUS (AGED 15 YEARS & OVER)—Tasmania

	TREND					SEASONALLY ADJUSTED					Civilian population aged 15 years and over
	Employed full time	Total employed	Total unemployed	Unemployment rate	Participation rate	Employed full time	Total employed	Total unemployed	Unemployment rate	Participation rate	
	'000	'000	'000	%	%	'000	'000	'000	%	%	
MALES											
October 2003	97.6	113.9	9.7	7.9	66.4	97.1	113.8	10.2	8.2	66.6	186.1
October 2004	99.3	117.5	8.1	6.5	66.5	100.0	118.1	8.1	6.4	66.8	188.9
2005											
October	100.9	121.8	8.5	6.5	68.2	100.2	121.1	8.9	6.8	68.0	191.0
November	101.5	122.6	8.8	6.7	68.8	101.9	122.8	8.9	6.7	68.9	191.0
December	101.9	123.0	8.9	6.7	69.0	102.8	124.8	8.7	6.5	69.9	191.1
2006											
January	102.1	123.1	8.9	6.8	69.1	101.9	123.8	9.2	6.9	69.5	191.2
February	102.1	122.8	9.0	6.8	68.9	101.8	121.9	9.1	7.0	68.5	191.3
March	101.9	122.3	9.2	7.0	68.7	101.9	120.6	8.6	6.6	67.5	191.4
April	101.6	121.8	9.3	7.1	68.5	101.5	122.6	9.0	6.8	68.7	191.5
May	101.2	121.3	9.4	7.2	68.2	101.8	122.0	9.9	7.5	68.9	191.6
June	100.8	120.9	9.5	7.3	68.0	101.0	120.9	9.8	7.5	68.2	191.7
July	100.6	120.4	9.4	7.2	67.7	99.9	119.9	10.0	7.7	67.7	191.8
August	100.4	120.0	9.2	7.1	67.3	99.9	119.7	8.2	6.4	66.6	192.0
September	100.4	119.6	9.0	7.0	66.9	100.5	119.6	9.1	7.1	67.0	192.1
October	100.4	119.2	8.8	6.9	66.6	101.2	119.5	8.7	6.8	66.6	192.3
FEMALES											
October 2003	47.5	95.1	6.0	6.0	51.7	47.5	96.2	5.7	5.6	52.2	195.5
October 2004	47.4	97.1	5.8	5.7	51.9	47.4	97.0	6.0	5.9	52.0	198.2
2005											
October	49.4	101.2	7.2	6.6	54.2	47.2	100.4	8.8	8.1	54.6	199.8
November	48.7	101.2	7.2	6.6	54.2	49.4	101.2	8.0	7.3	54.6	199.9
December	48.3	101.2	7.0	6.5	54.1	48.0	101.0	5.4	5.0	53.2	200.0
2006											
January	48.2	101.2	6.8	6.3	54.0	48.1	102.0	6.7	6.2	54.3	200.1
February	48.5	101.4	6.6	6.1	53.9	48.3	101.2	6.6	6.2	53.9	200.2
March	49.3	101.9	6.3	5.9	54.0	49.8	102.3	6.7	6.1	54.4	200.3
April	50.2	102.6	6.2	5.7	54.3	48.9	100.7	6.3	5.9	53.3	200.5
May	51.2	103.3	6.0	5.5	54.5	50.9	103.0	6.2	5.7	54.5	200.6
June	52.1	103.8	5.9	5.4	54.7	54.2	104.8	6.1	5.5	55.2	200.7
July	52.7	104.1	5.9	5.4	54.7	52.8	106.5	4.6	4.1	55.3	200.9
August	53.2	104.1	6.1	5.5	54.8	53.0	103.5	6.3	5.7	54.6	201.1
September	53.5	103.9	6.3	5.7	54.8	52.6	101.8	6.9	6.3	54.0	201.2
October	53.7	103.8	6.5	5.9	54.8	53.8	104.0	6.8	6.1	55.0	201.4
PERSONS											
October 2003	145.1	208.9	15.7	7.0	58.9	144.6	210.1	15.9	7.0	59.2	381.5
October 2004	146.7	214.6	13.9	6.1	59.0	147.4	215.1	14.2	6.2	59.2	387.2
2005											
October	150.3	223.0	15.7	6.6	61.1	147.4	221.5	17.7	7.4	61.2	390.8
November	150.2	223.8	15.9	6.7	61.3	151.3	224.0	16.9	7.0	61.6	390.9
December	150.2	224.3	15.9	6.6	61.4	150.8	225.9	14.1	5.9	61.4	391.1
2006											
January	150.3	224.3	15.7	6.5	61.3	150.0	225.8	15.9	6.6	61.8	391.3
February	150.6	224.2	15.6	6.5	61.3	150.1	223.1	15.8	6.6	61.0	391.5
March	151.2	224.2	15.5	6.5	61.2	151.7	223.0	15.2	6.4	60.8	391.7
April	151.8	224.4	15.5	6.5	61.2	150.5	223.3	15.3	6.4	60.9	391.9
May	152.4	224.5	15.5	6.4	61.2	152.7	225.1	16.2	6.7	61.5	392.2
June	152.9	224.7	15.4	6.4	61.2	155.1	225.8	15.8	6.5	61.6	392.4
July	153.3	224.5	15.3	6.4	61.1	152.7	226.4	14.6	6.1	61.4	392.7
August	153.6	224.1	15.2	6.4	60.9	152.9	223.2	14.5	6.1	60.5	393.1
September	153.8	223.5	15.2	6.4	60.7	153.1	221.5	16.0	6.7	60.4	393.4
October	154.1	223.0	15.3	6.4	60.5	155.0	223.4	15.4	6.5	60.7	393.8

	TREND					Civilian population aged 15 years and over
	Employed full time	Total employed	Total unemployed	Unemployment rate	Participation rate	
	'000	'000	'000	%	%	
MALES						
October 2003	43.5	53.7	2.7	4.9	76.4	73.9
October 2004	43.1	50.4	4.5	8.1	73.7	74.5
2005						
October	44.3	52.9	3.0	5.4	73.4	76.2
November	44.8	53.2	3.3	5.9	73.9	76.5
December	45.0	53.2	3.6	6.4	74.1	76.7
2006						
January	45.1	53.1	3.8	6.7	74.0	76.9
February	45.2	53.1	3.8	6.7	73.7	77.2
March	45.4	53.2	3.6	6.4	73.5	77.4
April	45.7	53.6	3.4	6.0	73.4	77.6
May	46.2	54.0	3.1	5.5	73.4	77.9
June	46.8	54.5	3.0	5.2	73.6	78.1
July	47.3	54.8	2.8	4.9	73.6	78.3
August	47.6	55.1	2.7	4.7	73.7	78.5
September	47.9	55.3	2.6	4.5	73.6	78.6
October	48.0	55.5	2.5	4.3	73.6	78.9
FEMALES						
October 2003	28.4	41.7	2.8	6.2	64.1	69.3
October 2004	29.2	43.7	2.9	6.3	66.6	70.0
2005						
October	31.0	44.3	2.5	5.4	65.6	71.4
November	30.9	44.2	2.7	5.7	65.5	71.7
December	30.9	44.2	2.8	6.0	65.5	71.9
2006						
January	31.1	44.4	2.9	6.1	65.7	72.0
February	31.5	44.7	2.9	6.1	66.0	72.1
March	31.9	45.2	2.9	6.0	66.6	72.2
April	32.4	45.8	2.7	5.6	67.2	72.3
May	32.8	46.5	2.5	5.1	67.6	72.4
June	33.2	47.0	2.2	4.4	67.8	72.5
July	33.7	47.3	1.8	3.6	67.7	72.5
August	34.1	47.5	1.4	2.8	67.3	72.6
September	34.5	47.6	1.0	2.0	66.8	72.6
October	34.7	47.5	0.6	1.3	66.3	72.8
PERSONS						
October 2003	71.9	95.4	5.5	5.5	70.5	143.2
October 2004	72.3	94.1	7.4	7.3	70.3	144.5
2005						
October	75.3	97.3	5.5	5.4	69.6	147.6
November	75.7	97.4	6.0	5.8	69.8	148.1
December	75.9	97.4	6.5	6.2	69.9	148.6
2006						
January	76.3	97.5	6.7	6.5	70.0	148.9
February	76.7	97.8	6.7	6.5	70.0	149.3
March	77.3	98.5	6.5	6.2	70.2	149.6
April	78.1	99.4	6.1	5.8	70.4	149.9
May	79.0	100.5	5.7	5.3	70.6	150.3
June	80.0	101.4	5.1	4.8	70.8	150.6
July	81.0	102.1	4.6	4.3	70.8	150.8
August	81.7	102.6	4.1	3.8	70.6	151.0
September	82.3	102.9	3.6	3.4	70.4	151.3
October	82.7	103.0	3.1	3.0	70.1	151.7

	TREND					<i>Civilian population aged 15 years and over</i>
	<i>Employed full time</i>	<i>Total employed</i>	<i>Total unemployed</i>	<i>Unemployment rate</i>	<i>Participation rate</i>	
	'000	'000	'000	%	%	
MALES						
October 2003	75.1	91.3	3.9	4.1	76.9	123.8
October 2004	78.6	91.4	4.5	4.7	76.5	124.9
2005						
October	79.0	94.2	3.0	3.1	77.0	126.3
November	79.1	94.4	3.0	3.1	77.1	126.4
December	79.2	94.7	3.0	3.1	77.2	126.5
2006						
January	79.6	95.0	3.1	3.2	77.5	126.6
February	79.9	95.3	3.3	3.4	77.8	126.7
March	80.3	95.4	3.5	3.5	78.0	126.8
April	80.7	95.4	3.6	3.6	78.0	126.9
May	81.1	95.5	3.6	3.6	78.0	127.0
June	81.6	95.7	3.4	3.5	78.0	127.1
July	82.1	96.1	3.3	3.3	78.1	127.3
August	82.6	96.6	3.1	3.1	78.2	127.4
September	83.1	97.2	2.9	2.9	78.5	127.6
October	83.4	97.8	2.8	2.8	78.7	127.8
FEMALES						
October 2003	52.7	84.0	3.5	4.0	66.4	131.8
October 2004	52.8	85.8	2.9	3.3	67.1	132.3
2005						
October	53.4	85.5	3.1	3.5	66.6	133.1
November	53.4	85.3	3.1	3.6	66.4	133.2
December	53.8	85.3	3.1	3.5	66.3	133.3
2006						
January	54.4	85.6	3.0	3.4	66.4	133.4
February	55.4	86.3	2.9	3.2	66.7	133.6
March	56.6	87.2	2.6	2.9	67.2	133.7
April	57.8	88.4	2.5	2.7	67.9	133.9
May	59.0	89.8	2.3	2.5	68.7	134.0
June	59.9	91.0	2.3	2.4	69.5	134.2
July	60.6	92.0	2.3	2.4	70.2	134.3
August	61.1	92.8	2.3	2.4	70.7	134.4
September	61.5	93.3	2.4	2.5	71.1	134.5
October	61.8	93.6	2.4	2.5	71.4	134.7
PERSONS						
October 2003	127.8	175.3	7.4	4.1	71.5	255.6
October 2004	131.3	177.2	7.4	4.0	71.6	257.1
2005						
October	132.4	179.7	6.1	3.3	71.7	259.3
November	132.5	179.7	6.1	3.3	71.6	259.6
December	133.0	180.0	6.1	3.3	71.6	259.8
2006						
January	134.0	180.7	6.2	3.3	71.8	260.1
February	135.3	181.6	6.2	3.3	72.1	260.3
March	136.9	182.7	6.1	3.2	72.5	260.5
April	138.5	183.9	6.1	3.2	72.8	260.8
May	140.0	185.2	5.9	3.1	73.2	261.1
June	141.5	186.7	5.7	3.0	73.6	261.3
July	142.7	188.1	5.5	2.9	74.0	261.6
August	143.8	189.4	5.4	2.8	74.4	261.8
September	144.6	190.5	5.3	2.7	74.7	262.1
October	145.2	191.4	5.2	2.6	74.9	262.5



Original—October 2006

	EMPLOYED			UNEMPLOYED			UNEMPLOYMENT RATE			Participation rate	
	Full time	Part time	Total	Looking for f/t work	Total	Labour force	Not in labour force	Civilian population aged 15 years and over	Looking for f/t work		Total
	'000	'000	'000	'000	'000	'000	'000	'000	%		%
MALES											
New South Wales	1 522.2	305.3	1 827.5	79.8	97.2	1 924.7	792.4	2 717.1	5.0	5.1	70.8
Victoria	1 170.2	230.0	1 400.2	52.6	68.4	1 468.6	556.3	2 024.9	4.3	4.7	72.5
Queensland	971.2	165.4	1 136.6	26.5	35.6	1 172.2	432.5	1 604.7	2.7	3.0	73.1
South Australia	347.5	68.9	416.4	14.0	17.4	433.8	191.2	625.0	3.9	4.0	69.4
Western Australia	518.4	82.2	600.6	13.6	17.8	618.4	205.3	823.7	2.6	2.9	75.1
Tasmania	100.2	19.1	119.2	7.2	8.5	127.7	64.6	192.3	6.7	6.6	66.4
Northern Territory	49.5	7.7	57.2	*1.1	*1.9	59.1	19.8	78.9	*2.1	*3.2	74.9
Australian Capital Territory	82.6	15.2	97.7	1.8	2.9	100.6	27.2	127.8	2.2	2.8	78.7
<b>Australia</b>	<b>4 761.6</b>	<b>893.8</b>	<b>5 655.4</b>	<b>196.6</b>	<b>249.7</b>	<b>5 905.1</b>	<b>2 289.4</b>	<b>8 194.5</b>	<b>4.0</b>	<b>4.2</b>	<b>72.1</b>
FEMALES											
New South Wales	834.9	641.5	1 476.4	47.5	67.0	1 543.4	1 258.7	2 802.1	5.4	4.3	55.1
Victoria	598.7	547.2	1 145.9	34.2	56.8	1 202.8	914.1	2 116.9	5.4	4.7	56.8
Queensland	529.2	417.6	946.8	23.0	40.7	987.5	645.9	1 633.4	4.2	4.1	60.5
South Australia	170.7	172.7	343.4	10.6	17.8	361.3	285.6	646.8	5.9	4.9	55.9
Western Australia	234.6	231.5	466.1	11.9	20.0	486.1	342.3	828.5	4.8	4.1	58.7
Tasmania	54.3	49.6	103.8	4.9	6.9	110.8	90.6	201.4	8.3	6.3	55.0
Northern Territory	34.7	12.5	47.3	*0.5	*0.6	47.9	24.9	72.8	*1.3	*1.3	65.8
Australian Capital Territory	60.1	32.2	92.3	*1.1	2.1	94.4	40.3	134.7	*1.8	2.2	70.1
<b>Australia</b>	<b>2 517.3</b>	<b>2 104.9</b>	<b>4 622.2</b>	<b>133.7</b>	<b>212.0</b>	<b>4 834.2</b>	<b>3 602.5</b>	<b>8 436.6</b>	<b>5.0</b>	<b>4.4</b>	<b>57.3</b>
PERSONS											
New South Wales	2 357.1	946.9	3 303.9	127.3	164.2	3 468.2	2 051.1	5 519.3	5.1	4.7	62.8
Victoria	1 768.9	777.2	2 546.1	86.8	125.2	2 671.3	1 470.4	4 141.8	4.7	4.7	64.5
Queensland	1 500.4	583.0	2 083.5	49.5	76.3	2 159.7	1 078.4	3 238.1	3.2	3.5	66.7
South Australia	518.2	241.6	759.8	24.6	35.2	795.1	476.8	1 271.8	4.5	4.4	62.5
Western Australia	753.0	313.7	1 066.7	25.5	37.8	1 104.5	547.7	1 652.2	3.3	3.4	66.9
Tasmania	154.4	68.6	223.1	12.1	15.4	238.5	155.3	393.8	7.3	6.5	60.6
Northern Territory	84.2	20.2	104.4	*1.6	*2.5	106.9	44.7	151.7	*1.8	*2.3	70.5
Australian Capital Territory	142.7	47.4	190.0	3.0	5.0	195.0	67.5	262.5	2.0	2.5	74.3
<b>Australia</b>	<b>7 278.9</b>	<b>2 998.7</b>	<b>10 277.6</b>	<b>330.3</b>	<b>461.7</b>	<b>10 739.3</b>	<b>5 891.9</b>	<b>16 631.1</b>	<b>4.3</b>	<b>4.3</b>	<b>64.6</b>

\* estimate is subject to sampling variability too high for most practical purposes

	EMPLOYED		UNEMPLOYED		UNEMPLOYMENT RATE		Participation rate	Employment to population ratio	Unemployment to population ratio – looking for full-time work
	Full time	Total	Looking for f/t work	Total	Looking for f/t work	Total			
	'000	'000	'000	'000	%	%			
MALES									
October 2003	151.6	345.9	35.1	66.8	18.8	16.2	58.7	49.2	5.0
October 2004	151.8	350.2	35.3	68.6	18.9	16.4	58.7	49.2	5.0
2005									
October	156.4	347.3	37.5	69.8	19.3	16.7	58.3	48.6	5.2
November	154.9	346.1	37.4	70.4	19.4	16.9	58.2	48.4	5.2
December	153.8	346.2	37.0	70.8	19.4	17.0	58.3	48.4	5.2
2006									
January	153.9	347.8	36.6	70.6	19.2	16.9	58.4	48.6	5.1
February	154.7	350.4	36.4	70.1	19.0	16.7	58.7	48.9	5.1
March	155.6	353.6	36.3	69.4	18.9	16.4	59.0	49.3	5.1
April	156.3	356.1	36.5	68.9	18.9	16.2	59.2	49.6	5.1
May	156.5	357.6	36.5	68.5	18.9	16.1	59.3	49.8	5.1
June	156.5	358.4	36.3	68.1	18.8	16.0	59.3	49.8	5.0
July	156.2	358.5	35.7	68.0	18.6	15.9	59.3	49.8	5.0
August	156.2	358.7	34.8	67.7	18.2	15.9	59.3	49.8	4.8
September	156.5	358.9	33.7	67.4	17.7	15.8	59.2	49.9	4.7
October	157.0	359.3	32.7	67.0	17.2	15.7	59.2	49.9	4.5
FEMALES									
October 2003	82.0	348.2	27.1	61.3	24.8	15.0	60.6	51.5	4.0
October 2004	88.9	353.0	25.8	62.6	22.5	15.0	60.8	51.7	3.8
2005									
October	81.8	359.0	26.9	64.5	24.7	15.2	61.9	52.5	3.9
November	81.6	356.6	26.6	63.1	24.6	15.0	61.3	52.1	3.9
December	81.7	354.8	26.2	61.7	24.3	14.8	60.8	51.8	3.8
2006									
January	81.4	353.2	26.0	61.0	24.2	14.7	60.5	51.6	3.8
February	80.6	352.0	25.9	61.0	24.3	14.8	60.3	51.4	3.8
March	79.7	351.8	26.0	61.6	24.6	14.9	60.3	51.3	3.8
April	79.3	353.0	26.4	62.4	25.0	15.0	60.6	51.5	3.8
May	79.8	355.6	26.7	62.5	25.0	15.0	60.9	51.8	3.9
June	81.2	359.1	26.8	61.7	24.8	14.7	61.3	52.3	3.9
July	83.4	362.7	26.9	60.1	24.4	14.2	61.5	52.8	3.9
August	85.5	365.7	26.8	58.2	23.9	13.7	61.6	53.2	3.9
September	87.4	367.8	26.8	56.3	23.5	13.3	61.6	53.5	3.9
October	88.8	369.2	26.6	54.0	23.1	12.8	61.5	53.6	3.9
PERSONS									
October 2003	233.5	694.1	62.1	128.1	21.0	15.6	59.6	50.3	4.5
October 2004	240.8	703.2	61.1	131.2	20.2	15.7	59.8	50.4	4.4
2005									
October	238.2	706.3	64.4	134.3	21.3	16.0	60.1	50.5	4.6
November	236.5	702.8	64.0	133.6	21.3	16.0	59.7	50.2	4.6
December	235.5	701.0	63.2	132.5	21.2	15.9	59.5	50.1	4.5
2006									
January	235.2	701.0	62.6	131.6	21.0	15.8	59.4	50.0	4.5
February	235.2	702.5	62.3	131.2	20.9	15.7	59.5	50.1	4.4
March	235.4	705.3	62.4	131.0	20.9	15.7	59.6	50.3	4.4
April	235.6	709.0	62.8	131.2	21.1	15.6	59.9	50.5	4.5
May	236.3	713.2	63.2	131.0	21.1	15.5	60.1	50.8	4.5
June	237.7	717.6	63.1	129.9	21.0	15.3	60.3	51.0	4.5
July	239.6	721.3	62.5	128.1	20.7	15.1	60.4	51.3	4.4
August	241.7	724.3	61.6	125.9	20.3	14.8	60.4	51.5	4.4
September	243.9	726.7	60.5	123.6	19.9	14.5	60.4	51.6	4.3
October	245.8	728.4	59.3	121.0	19.4	14.2	60.3	51.7	4.2

	EMPLOYED		UNEMPLOYED		UNEMPLOYMENT RATE		Participation rate	Employment to population ratio	Unemployment to population ratio – looking for full-time work
	Full time	Total	Looking for f/t work	Total	Looking for f/t work	Total			
	'000	'000	'000	'000	%	%			
MALES									
October 2003	154.6	348.1	36.6	68.9	19.1	16.5	59.3	49.5	5.2
October 2004	149.2	345.4	33.0	67.9	18.1	16.4	58.1	48.5	4.6
2005									
October	150.2	337.5	39.3	75.7	20.7	18.3	57.8	47.2	5.5
November	162.2	352.0	37.2	68.0	18.7	16.2	58.7	49.2	5.2
December	151.7	345.5	35.8	69.3	19.1	16.7	57.9	48.3	5.0
2006									
January	150.5	342.7	37.4	72.5	19.9	17.5	58.0	47.8	5.2
February	154.3	354.4	35.7	68.2	18.8	16.1	59.0	49.4	5.0
March	157.5	355.3	36.3	71.1	18.7	16.7	59.5	49.5	5.1
April	155.7	352.8	36.2	69.8	18.9	16.5	58.9	49.1	5.0
May	158.8	356.5	37.2	67.6	19.0	15.9	59.0	49.6	5.2
June	161.3	368.0	35.2	66.1	17.9	15.2	60.4	51.2	4.9
July	148.0	354.9	37.8	68.1	20.4	16.1	58.8	49.3	5.3
August	155.2	355.6	34.1	67.0	18.0	15.8	58.7	49.4	4.7
September	160.3	356.6	35.4	74.2	18.1	17.2	59.8	49.5	4.9
October	157.7	362.9	29.4	61.4	15.7	14.5	58.9	50.4	4.1
FEMALES									
October 2003	78.2	351.6	25.0	60.1	24.2	14.6	60.9	52.0	3.7
October 2004	91.5	356.1	25.4	60.3	21.8	14.5	60.9	52.1	3.7
2005									
October	79.9	354.6	28.9	67.2	26.5	15.9	61.6	51.8	4.2
November	80.1	359.2	25.1	62.6	23.9	14.8	61.6	52.5	3.7
December	80.2	351.3	25.5	61.5	24.1	14.9	60.3	51.3	3.7
2006									
January	85.3	356.9	26.6	59.9	23.8	14.4	60.9	52.1	3.9
February	83.2	352.2	26.1	60.2	23.9	14.6	60.2	51.4	3.8
March	76.4	352.2	24.6	56.2	24.4	13.8	59.6	51.4	3.6
April	80.9	351.4	27.5	70.2	25.3	16.7	61.5	51.2	4.0
May	77.4	350.6	26.0	61.0	25.1	14.8	60.0	51.1	3.8
June	75.6	359.2	28.6	63.4	27.5	15.0	61.5	52.3	4.2
July	89.2	366.6	24.8	58.5	21.7	13.8	61.9	53.4	3.6
August	88.0	368.1	28.8	59.9	24.7	14.0	62.2	53.5	4.2
September	84.3	370.8	25.3	54.5	23.1	12.8	61.8	53.9	3.7
October	90.0	363.0	27.0	53.2	23.1	12.8	60.4	52.7	3.9
PERSONS									
October 2003	232.8	699.7	61.6	129.0	20.9	15.6	60.1	50.7	4.5
October 2004	240.7	701.5	58.5	128.1	19.5	15.4	59.5	50.3	4.2
2005									
October	230.1	692.1	68.2	142.9	22.9	17.1	59.7	49.5	4.9
November	242.3	711.1	62.4	130.5	20.5	15.5	60.1	50.8	4.5
December	232.0	696.8	61.2	130.8	20.9	15.8	59.1	49.8	4.4
2006									
January	235.8	699.6	64.0	132.5	21.4	15.9	59.4	49.9	4.6
February	237.5	706.6	61.8	128.4	20.6	15.4	59.6	50.4	4.4
March	233.9	707.4	61.0	127.2	20.7	15.2	59.5	50.5	4.3
April	236.6	704.1	63.6	140.0	21.2	16.6	60.1	50.2	4.5
May	236.2	707.1	63.2	128.6	21.1	15.4	59.5	50.3	4.5
June	236.9	727.2	63.8	129.5	21.2	15.1	60.9	51.7	4.5
July	237.2	721.5	62.6	126.6	20.9	14.9	60.3	51.3	4.5
August	243.2	723.7	62.9	126.8	20.6	14.9	60.4	51.4	4.5
September	244.5	727.3	60.7	128.7	19.9	15.0	60.8	51.7	4.3
October	247.7	725.9	56.4	114.5	18.6	13.6	59.6	51.5	4.0

	EMPLOYED			UNEMPLOYED			UNEMPLOYMENT RATE			Unemployment to population ratio – looking for full-time work		
	Full time	Part time	Total	Looking for f/t work	Total Labour force	Not in labour force	Civilian population aged 15–19 years	Looking for f/t work	Total	Participation rate	Unemployment ratio – looking for full-time work	
	'000	'000	'000	'000	'000	'000	'000	%	%	%	%	
NOT ATTENDING FULL-TIME EDUCATION												
<b>Males</b>												
October 2003	139.1	35.0	174.1	27.5	29.5	203.6	14.3	217.9	16.5	14.5	93.4	12.6
October 2004	136.9	29.7	166.6	25.1	27.4	193.9	23.7	217.7	15.5	14.1	89.1	11.5
October 2005	135.7	33.6	169.3	29.3	32.2	201.6	18.1	219.7	17.8	16.0	91.8	13.3
October 2006	140.8	38.0	178.8	23.0	25.7	204.5	28.6	233.1	14.1	12.6	87.7	9.9
<b>Females</b>												
October 2003	70.4	52.5	123.0	17.7	20.8	143.8	26.7	170.4	20.1	14.5	84.3	10.4
October 2004	81.0	52.9	134.0	16.3	19.1	153.1	28.1	181.2	16.8	12.5	84.5	9.0
October 2005	71.7	46.3	118.0	19.9	24.3	142.3	21.5	163.8	21.8	17.1	86.9	12.2
October 2006	81.4	40.5	121.9	17.1	18.7	140.5	22.1	162.7	17.4	13.3	86.4	10.5
<b>Persons</b>												
October 2003	209.6	87.5	297.1	45.2	50.2	347.3	41.0	388.3	17.7	14.5	89.4	11.6
October 2004	217.9	82.6	300.5	41.4	46.5	347.0	51.8	398.8	16.0	13.4	87.0	10.4
October 2005	207.5	79.9	287.4	49.3	56.5	343.9	39.6	383.5	19.2	16.4	89.7	12.8
October 2006	222.2	78.5	300.7	40.2	44.4	345.0	50.7	395.7	15.3	12.9	87.2	10.2
ATTENDING FULL-TIME EDUCATION												
<b>Males</b>												
October 2003	8.5	163.2	171.7	6.3	33.3	205.0	280.6	485.6	42.4	16.2	42.2	1.3
October 2004	5.5	170.7	176.2	5.5	34.8	211.1	282.8	493.8	49.8	16.5	42.7	1.1
October 2005	7.1	158.2	165.3	6.8	37.3	202.7	292.8	495.5	49.0	18.4	40.9	1.4
October 2006	9.0	171.7	180.7	*4.0	30.7	211.4	276.3	487.6	*30.7	14.5	43.3	*0.8
<b>Females</b>												
October 2003	5.2	218.3	223.5	*3.6	35.4	258.9	246.3	505.2	*41.4	13.7	51.2	*0.7
October 2004	7.4	209.1	216.5	5.3	37.5	254.0	248.1	502.0	41.9	14.8	50.6	1.1
October 2005	5.6	224.9	230.5	*4.6	38.9	269.3	251.1	520.4	*45.2	14.4	51.8	*0.9
October 2006	5.7	229.0	234.7	5.9	31.4	266.1	260.1	526.3	50.7	11.8	50.6	1.1
<b>Persons</b>												
October 2003	13.7	381.5	395.2	9.9	68.7	463.9	526.9	990.8	42.0	14.8	46.8	1.0
October 2004	12.9	379.8	392.7	10.8	72.3	465.0	530.9	995.9	45.6	15.6	46.7	1.1
October 2005	12.7	383.1	395.8	11.4	76.2	472.0	543.9	1 015.9	47.4	16.1	46.5	1.1
October 2006	14.7	400.7	415.4	9.9	62.1	477.5	536.4	1 013.9	40.1	13.0	47.1	1.0
TOTAL												
<b>Males</b>												
October 2003	147.6	198.2	345.8	33.8	62.8	408.6	294.9	703.5	18.6	15.4	58.1	4.8
October 2004	142.4	200.4	342.8	30.5	62.2	405.0	306.5	711.5	17.7	15.4	56.9	4.3
October 2005	142.9	191.8	334.7	36.2	69.6	404.2	310.9	715.1	20.2	17.2	56.5	5.1
October 2006	149.8	209.7	359.5	27.0	56.4	415.9	304.8	720.7	15.3	13.6	57.7	3.7
<b>Females</b>												
October 2003	75.6	270.8	346.5	21.3	56.2	402.6	273.0	675.6	22.0	14.0	59.6	3.2
October 2004	88.4	262.0	350.4	21.7	56.6	407.1	276.2	683.2	19.7	13.9	59.6	3.2
October 2005	77.3	271.2	348.5	24.5	63.1	411.6	272.6	684.2	24.1	15.3	60.2	3.6
October 2006	87.2	269.5	356.6	23.0	50.0	406.7	282.2	688.9	20.9	12.3	59.0	3.3
<b>Persons</b>												
October 2003	223.2	469.0	692.3	55.1	118.9	811.2	567.9	1 379.1	19.8	14.7	58.8	4.0
October 2004	230.8	462.5	693.2	52.2	118.8	812.0	582.7	1 394.7	18.4	14.6	58.2	3.7
October 2005	220.2	463.0	683.2	60.7	132.7	815.9	583.4	1 399.3	21.6	16.3	58.3	4.3
October 2006	236.9	479.2	716.1	50.0	106.4	822.5	587.1	1 409.6	17.4	12.9	58.4	3.6

\* estimate is subject to sampling variability too high for most practical purposes

	EMPLOYED			UNEMPLOYED		Labour force	Not in labour force	Civilian population aged 15–19 years	UNEMPLOYMENT RATE		Participation rate	Unemployment to population ratio – looking for full-time work
	Full time	Part time	Total	Looking for f/t work	Total				Looking for f/t work	Total		
	'000	'000	'000	'000	'000				'000	'000		
NOT ATTENDING FULL-TIME EDUCATION												
New South Wales	63.7	24.1	87.7	13.8	16.6	104.3	13.6	117.9	17.9	15.9	88.4	11.7
Victoria	38.3	17.5	55.8	8.4	8.7	64.5	9.0	73.6	17.9	13.5	87.7	11.4
Queensland	60.7	17.5	78.3	7.8	8.3	86.5	12.2	98.7	11.4	9.5	87.7	7.9
South Australia	14.1	7.3	21.4	4.1	4.1	25.5	5.6	31.1	22.5	16.1	82.0	13.2
Western Australia	32.5	8.6	41.2	3.5	3.9	45.0	6.5	51.5	9.6	8.6	87.4	6.7
Tasmania	6.2	2.0	8.2	*1.6	1.7	9.8	*1.1	11.0	*20.2	16.9	89.6	*14.2
Northern Territory	2.8	*0.6	3.5	*0.4	*0.5	4.0	2.0	5.9	*11.1	*12.9	67.1	*5.9
Australian Capital Territory	3.8	*0.8	4.6	*0.6	*0.7	5.4	*0.6	6.0	*14.3	*13.7	89.3	*10.6
<b>Australia</b>	<b>222.2</b>	<b>78.5</b>	<b>300.7</b>	<b>40.2</b>	<b>44.4</b>	<b>345.0</b>	<b>50.7</b>	<b>395.7</b>	<b>15.3</b>	<b>12.9</b>	<b>87.2</b>	<b>10.2</b>
ATTENDING FULL-TIME EDUCATION												
New South Wales	*4.1	116.7	120.8	*5.0	16.3	137.1	204.4	341.4	*55.0	11.9	40.1	*1.5
Victoria	*0.6	103.1	103.7	*1.6	18.6	122.3	146.0	268.3	*72.1	15.2	45.6	*0.6
Queensland	4.5	93.8	98.3	*0.5	12.1	110.4	76.3	186.8	*9.8	11.0	59.1	*0.3
South Australia	*0.9	28.0	28.9	*1.1	6.7	35.5	36.8	72.3	*55.6	18.7	49.1	*1.6
Western Australia	3.6	39.6	43.1	*0.9	5.1	48.2	47.3	95.6	*20.6	10.6	50.5	*1.0
Tasmania	*0.3	8.5	8.8	*0.7	1.9	10.7	12.5	23.2	*67.7	18.0	46.2	*2.8
Northern Territory	*0.3	2.7	3.0	—	—	3.0	6.1	9.1	—	—	32.7	—
Australian Capital Territory	*0.4	8.4	8.8	*0.1	*1.4	10.2	6.9	17.1	*19.0	*13.8	59.7	*0.5
<b>Australia</b>	<b>14.7</b>	<b>400.7</b>	<b>415.4</b>	<b>9.9</b>	<b>62.1</b>	<b>477.5</b>	<b>536.4</b>	<b>1 013.9</b>	<b>40.1</b>	<b>13.0</b>	<b>47.1</b>	<b>1.0</b>
TOTAL												
New South Wales	67.7	140.8	208.5	18.8	32.8	241.3	218.0	459.4	21.7	13.6	52.5	4.1
Victoria	38.9	120.6	159.6	10.0	27.3	186.8	155.1	341.9	20.4	14.6	54.6	2.9
Queensland	65.3	111.3	176.6	8.3	20.4	197.0	88.5	285.5	11.3	10.3	69.0	2.9
South Australia	15.0	35.3	50.3	5.2	10.8	61.1	42.4	103.4	25.8	17.6	59.0	5.0
Western Australia	36.1	48.2	84.3	4.4	9.0	93.3	53.8	147.1	10.8	9.6	63.4	3.0
Tasmania	6.5	10.5	17.0	2.2	3.6	20.6	13.7	34.2	25.4	17.5	60.1	6.5
Northern Territory	3.1	3.3	6.4	*0.4	*0.5	7.0	8.1	15.0	*10.1	*7.4	46.3	*2.3
Australian Capital Territory	4.2	9.2	13.4	*0.7	2.1	15.5	7.5	23.1	*14.8	13.8	67.3	*3.2
<b>Australia</b>	<b>236.9</b>	<b>479.2</b>	<b>716.1</b>	<b>50.0</b>	<b>106.4</b>	<b>822.5</b>	<b>587.1</b>	<b>1 409.6</b>	<b>17.4</b>	<b>12.9</b>	<b>58.4</b>	<b>3.6</b>

\* estimate is subject to sampling variability too high for most practical purposes

— nil or rounded to zero (including null cells)

# WHAT IF...? REVISIONS TO TREND ESTIMATES

## EFFECT OF NEW SEASONALLY ADJUSTED ESTIMATES ON TREND ESTIMATES

### TREND REVISIONS

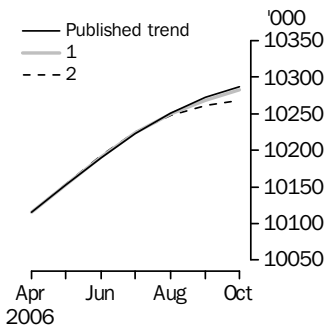
Each time new seasonally adjusted estimates become available, trend estimates are revised. This revision is a combined result of the concurrent seasonal adjustment process and the application of surrogates of the Henderson average to the seasonally adjusted series (see paragraphs 21 to 29 of the Explanatory Notes).

The examples in the tables below show two illustrative scenarios and the consequent revisions to previous trend estimates of employment and the unemployment rate. The revisions in the scenarios below are only due to the use of surrogates of the Henderson average, as the impact of revision of the seasonally adjusted estimates can not be estimated in advance.

- (1) The November seasonally adjusted estimate is *higher* than the October estimate by:
  - 0.26% for employment
  - 1.80% for the unemployment rate
- (2) The November seasonally adjusted estimate is *lower* than the October estimate by:
  - 0.26% for employment
  - 1.80% for the unemployment rate

The percentage changes of 0.26% and 1.80% were chosen because they represent the average absolute monthly percentage changes in employment and the unemployment rate respectively.

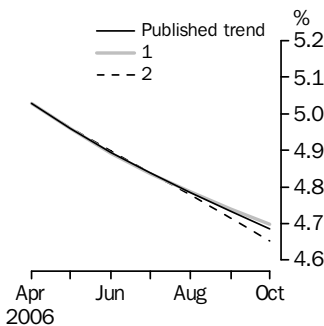
### EMPLOYMENT



#### WHAT IF NEXT MONTH'S SEASONALLY ADJUSTED ESTIMATE IS:

	<i>Trend as published</i>	(1) 10 283.6 i.e. <i>rises by 0.26%</i>	(2) 10 230.3 i.e. <i>falls by 0.26%</i>
<b>2006</b>			
July	10 223.2	10 223.7	10 224.6
August	10 250.8	10 249.6	10 247.2
September	10 272.1	10 268.8	10 260.9
October	10 287.4	10 282.6	10 267.8

### UNEMPLOYMENT RATE



#### WHAT IF NEXT MONTH'S SEASONALLY ADJUSTED ESTIMATE IS:

	<i>Trend as published</i>	(1) 4.7 i.e. <i>rises by 1.80%</i>	(2) 4.5 i.e. <i>falls by 1.80%</i>
<b>2006</b>			
July	4.8	4.8	4.8
August	4.8	4.8	4.8
September	4.7	4.7	4.7
October	4.7	4.7	4.7

## EXPLANATORY NOTES

### INTRODUCTION

**1** This publication contains estimates of the civilian labour force derived from the Labour Force Survey component of the Monthly Population Survey. The full time series for estimates from this publication are also available electronically – see *Labour Force, Australia, Spreadsheets* (cat. no. 6202.0.55.001). More detailed estimates are released one week after this publication in various electronic formats – see *Labour Force, Australia, Detailed – Electronic Delivery* (cat. no. 6291.0.55.001) and *Labour Force, Australia, Detailed, Quarterly* (cat. no. 6291.0.55.003).

### CONCEPTS, SOURCES AND METHODS

**2** The conceptual framework used in Australia's Labour Force Survey aligns closely with the standards and guidelines set out in Resolutions of International Conferences of Labour Statisticians. Descriptions of the underlying concepts and structure of Australia's labour force statistics, and the sources and methods used in compiling the estimates, are presented in *Labour Statistics: Concepts, Sources and Methods* (cat. no. 6102.0.55.001) which is available on the ABS web site <<http://www.abs.gov.au>> (Methods, Classifications, Concepts & Standards).

### LABOUR FORCE SURVEY

**3** The Labour Force Survey is based on a multi-stage area sample of private dwellings (currently about 30,000 houses, flats, etc.) and a list sample of non-private dwellings (hotels, motels, etc.), and covers about 0.45% of the population of Australia. Information is obtained from the occupants of selected dwellings by specially trained interviewers.

**4** The information is collected using computer-assisted interviewing (CAI), whereby responses are recorded directly onto an electronic questionnaire on a notebook computer. The CAI method was progressively implemented from October 2003 to August 2004, replacing the 'pen and paper' method previously used.

**5** Households selected for the Labour Force Survey are interviewed each month for eight months, with one-eighth of the sample being replaced each month. The first interview is conducted face-to-face. Subsequent interviews are conducted by telephone (if acceptable to the respondent).

**6** The interviews are generally conducted during the two weeks beginning on the Monday between the 6th and 12th of each month. The information obtained relates to the week before the interview (i.e. the reference week). Each year, to deal with operational difficulties involved with collecting and processing the Labour Force Survey around the Christmas and New Year holiday period, interviews for December start four weeks after November interviews start, and January interviews start five weeks after December interviews start. As a result, January interviewing may commence as early as the 8th or as late as the 14th, depending on the year. Occasionally, circumstances that present significant operational difficulties for survey collection can result in a change to the normal pattern for the start of interviewing.

**7** Estimates from the Labour Force Survey are published first in this publication 31 days after the commencement of interviews for that month, with the exception of estimates for each December which are published 38 days after the commencement of interviews.

### SCOPE OF SURVEY

**8** The Labour Force Survey includes all persons aged 15 years and over except members of the permanent defence forces, certain diplomatic personnel of overseas governments customarily excluded from census and estimated population counts, overseas residents in Australia, and members of non-Australian defence forces (and their dependants) stationed in Australia.

### COVERAGE

**9** In the Labour Force Survey, coverage rules are applied which aim to ensure that each person is associated with only one dwelling, and hence has only one chance of selection. The coverage rules are necessarily a balance between theoretical and operational considerations. Nevertheless, the chance of a person being enumerated at two separate dwellings in the survey is considered to be negligible.

## EXPLANATORY NOTES *continued*

### POPULATION BENCHMARKS

**10** Labour Force Survey estimates are calculated in such a way as to add up to independent estimates of the civilian population aged 15 years and over (population benchmarks). From February 2004, labour force estimates have been compiled using benchmarks based on the results of the 2001 Census of Population and Housing. Revisions were made to historical estimates from January 1999 to January 2004.

### COMPARABILITY OF SERIES

**11** From April 1986, the definition of employed persons was changed to include persons who worked without pay between 1 and 14 hours per week in a family business or on a farm (i.e. contributing family workers). For further information, see paragraphs 36 and 37 of the Explanatory Notes to the February 1987 issue of *Labour Force, Australia* (cat. no. 6203.0).

**12** The ABS introduced telephone interviewing into the Labour Force Survey in August 1996. Implementation was phased in for each new sample group from August 1996 to February 1997. During the period of implementation, the new method produced different estimates than would have been obtained under the old methodology. The effect dissipated over the final months of implementation and was no longer discernible from February 1997. The estimates for February 1997 and onwards are directly comparable to estimates for periods prior to August 1996. For further details, see the feature article in the June 1997 issue of *Labour Force, Australia* (cat. no. 6203.0).

**13** From April 2001 the Labour Force Survey has been conducted using a redesigned questionnaire containing additional data items and some minor definitional changes. The definition of unemployed persons was changed to include all persons who were waiting to start work and were available to start in the reference week. This change was introduced in February 2004, when historical unit record data were revised from April 2001 to January 2004. This revision created a small trend break at April 2001 in unemployed persons and unemployment rate series. For further details, see *Information Paper: Forthcoming Changes to Labour Force Statistics* (cat. no. 6292.0).

**14** Core labour force series were revised in April 2001 for the period April 1986 to March 2001 for the remaining definitional changes introduced with the redesigned questionnaire, to reduce the impact of the changes on labour force series. For further details, see *Information Paper: Implementing the Redesigned Labour Force Survey Questionnaire* (cat. no. 6295.0) and *Information Paper: Questionnaires Used in the Labour Force Survey* (cat. no. 6232.0).

### SURVEY SAMPLE REDESIGN

**15** The Labour Force Survey sample was last reselected using information collected in the 2001 Census of Population and Housing.

**16** The bulk of the new sample was phased in over the period November 2002 to June 2003, with one-eighth of this portion of the sample being introduced every month. The remainder of the sample (about 18% of the total), which covers less settled areas of Australia and non-private dwellings was rotated in full for New South Wales, Victoria, Tasmania, Northern Territory and Australian Capital Territory in November 2002, and for Queensland, South Australia and Western Australia in December 2002. Such a pattern of implementation means that any changes to labour force estimates due to differences between the two samples, or any other influences, were spread over the eight months.

**17** For further details, see *Information Paper: Labour Force Survey Sample Design* (cat. no. 6269.0) and *Technical Report: New Labour Force Survey sample selections: analysis of the effect on estimates* in the October 2003 issue of *Australian Labour Market Statistics* (cat. no. 6105.0).



## EXPLANATORY NOTES *continued*

### RELIABILITY OF ESTIMATES

**18** Two types of error are possible in an estimate based on a sample survey: sampling error and non-sampling error.

**19** Sampling error occurs because a sample, rather than the entire population, is surveyed. One measure of the likely difference resulting from not including all dwellings in the survey is given by the standard error. There are about two chances in three that a sample estimate will differ by less than one standard error from the figure that would have been obtained if all dwellings had been included in the survey, and about nineteen chances in twenty that the difference will be less than two standard errors. Standard errors of estimates for the latest month and of estimates of movements since the previous month are shown on pages 27 and 28. Standard errors of other estimates and other movements may be determined by using information in the paper *Labour Force Survey Standard Errors* (cat. no. 6298.0) which is available free of charge on the ABS web site <<http://www.abs.gov.au>> (Statistics).

**20** Non-sampling error arises from inaccuracies in collecting, recording and processing the data. Every effort is made to minimise reporting error by the careful design of questionnaires, intensive training and supervision of interviewers, and efficient data processing procedures. Non-sampling error also arises because information cannot be obtained from all persons selected in the survey. The Labour Force Survey receives a high level of co-operation from individuals in selected dwellings, with the average response rate over the last year being 95%. See Glossary for definition of response rate.

### SEASONAL ADJUSTMENT AND TREND ESTIMATION

**21** Seasonal adjustment is a means of removing the estimated effects of normal seasonal variation from the series so that the effects of other influences on the series can be more clearly recognised. Seasonal adjustment does not aim to remove the irregular or non-seasonal influences which may be present in any particular month. This means that month-to-month movements of the seasonally adjusted estimates may not be reliable indicators of trend behaviour.

**22** The Labour Force Survey uses the concurrent seasonal adjustment method to derive seasonal factors. Concurrent seasonal adjustment uses data up to the current month to estimate seasonal factors for the current and all previous months. This process can result in revisions each month to estimates for earlier periods. However, in most instances, the only noticeable revisions will be to the seasonally adjusted estimates for the previous month and one year prior to the current month.

**23** Seasonal adjustment is able to remove the effect of events which occur at the same time in the survey every year. However, there are some events, like holidays, which are not always at the same time in the survey cycle or which are not at the same time across Australia. The effects of these types of events on LFS estimates cannot in all cases be removed, because the pattern of their effects cannot be determined. However, two events which are adjusted for in the seasonally adjusted series are the January interview start date and the timing of Easter.

**24** For more information on concurrent seasonal adjustment and survey proximity to holiday periods, see *Information Paper: Forthcoming Changes to Labour Force Statistics* (cat. no. 6292.0) released in December 2003.

**25** While seasonal factors for the complete time series are estimated each month, they will continue to be reviewed annually at a more detailed level to take into account each additional year's original data. This annual review will not normally result in significant changes to published estimates. The review will be conducted in February each year with the results released in the February issue of this publication.

## EXPLANATORY NOTES *continued*

### SEASONAL ADJUSTMENT AND TREND ESTIMATION *continued*

**26** The smoothing of seasonally adjusted series to produce 'trend' series reduces the impact of the irregular component of the seasonally adjusted series. These trend estimates are derived by applying a 13-term Henderson-weighted moving average to all months except the last six. The last six monthly trend estimates are obtained by applying surrogates of the Henderson average to the seasonally adjusted series. Trend estimates are used to analyse the underlying behaviour of a series over time.

**27** While this smoothing technique enables estimates to be produced for the latest month, it does result in revisions in addition to those caused by the revision of seasonally adjusted estimates. Generally, revisions due to the use of surrogates of the Henderson average become smaller, and after three months have a negligible impact on the series.

**28** Trend estimates are published for the Northern Territory in table 10 and for the Australian Capital Territory in table 11. Unadjusted series for the two territories have shown, historically, a high degree of variability, which can lead to considerable revisions to the seasonally adjusted estimates each month when seasonal factors are estimated. For this reason, seasonally adjusted estimates are not currently published for the two Territories. In addition, caution should be exercised in the interpretation of trend estimates for the two territories, particularly for the three most recent months, where revisions may be relatively large.

**29** For further information, see *A Guide to Interpreting Time Series – Monitoring Trends* (cat. no. 1349.0) or contact the Assistant Director, Time Series Analysis on (02) 6252 6345.

### RELATED PUBLICATIONS

**30** Users may also wish to refer to *Australian Labour Market Statistics* (cat. no. 6105.0). This publication contains additional tables and a detailed list of related publications. For further information about this publication, please contact the Assistant Director, Labour Market Statistics on (02) 6252 7636.

**31** ABS Information about the labour market can be found on the Labour theme page on the ABS web site <<http://www.abs.gov.au>> (Themes), or from ABS Bookshops.

**32** Current publications and other products released by the ABS are listed in the *Catalogue of Publications and Products* (cat. no. 1101.0). The Catalogue is available from any ABS office or the ABS web site <<http://www.abs.gov.au>> (Statistics). The ABS also issues a daily Release Advice on the web site (Future Releases) which details products to be released in the week ahead.

### DATA AVAILABLE ON REQUEST

**33** As well as the statistics included in this and related publications, the ABS may have other relevant data available. Inquiries should be made to the Labour Force contact officer on (02) 6252 6525 or to any ABS office.

### EFFECTS OF ROUNDING

**34** Estimates have been rounded and discrepancies may occur between sums of the component items and totals.

**35** Estimates of movement shown in this publication are obtained by taking the difference of unrounded estimates. The movement estimate is then rounded to one decimal place. Therefore where a discrepancy occurs between the reported movement and the difference of the rounded estimates, the reported movement will be more accurate.

### SYMBOLS AND OTHER USAGES

**36** SYMBOLS AND OTHER USAGES  
pts percentage points

## STANDARD ERRORS

### STANDARD ERRORS

The estimates in this publication are based on information gained from the occupants of a sample survey of dwellings. Because the entire population is not surveyed, the published estimates are subject to sampling error. The most common way of quantifying such sampling error is to calculate the standard error for the published estimate or statistic. For more information, see paragraph 19 of the Explanatory Notes.

### LEVEL ESTIMATES

To illustrate, let us say the published level estimate for employed persons aged 15–19 years is 700,000 and the associated standard error is 9,800. The standard error is then used to interpret the level estimate of 700,000. For instance, the standard error of 9,800 indicates that:

- There are approximately two chances in three that the real value falls within the range 690,200 to 709,800 (700,000 + or – 9,800)
- There are approximately nineteen chances in twenty that the real value falls within the range 680,400 to 719,600 (700,000 + or – 19,600).

The real value in this case is the result we would obtain if we could enumerate the total population.

The following table shows the standard errors for this month's level estimates.

AUSTRALIA												
.....												
		NSW	Vic.	Qld	SA	WA	Tas.	NT	ACT	Males	Females	Persons
<b>Aged 15 years and over</b>												
Employed												
Full time	'000	21.5	17.1	14.5	6.5	8.6	3.0	4.3	2.2	26.7	18.4	32.5
Part time	'000	13.6	11.2	9.8	4.5	6.0	2.0	1.4	1.4	10.2	16.5	20.5
Total	'000	25.0	20.2	15.6	7.6	9.5	3.6	5.1	2.3	29.1	26.3	37.0
Unemployed												
Looking for f/t work	'000	7.6	5.6	3.8	2.1	2.3	1.3	0.5	0.5	7.8	6.4	10.3
Looking for p/t work	'000	3.9	3.6	2.8	1.4	1.6	0.6	0.4	0.4	3.9	4.8	6.3
Total	'000	8.7	6.9	4.8	2.5	2.8	1.4	0.7	0.7	8.9	8.1	12.3
Labour force	'000	25.5	20.7	15.7	7.8	9.6	3.7	5.2	2.3	29.7	26.9	37.5
Not in labour force	'000	23.1	17.8	13.3	6.6	9.1	3.3	4.5	2.0	24.2	29.3	34.7
Unemployment rate												
Looking for f/t work	pts	0.3	0.3	0.2	0.4	0.3	0.8	0.6	0.4	0.2	0.2	0.1
Looking for p/t work	pts	0.4	0.4	0.5	0.5	0.5	0.8	1.8	0.9	0.4	0.2	0.2
Total	pts	0.2	0.3	0.2	0.3	0.2	0.6	0.6	0.4	0.1	0.2	0.1
Participation rate	pts	0.5	0.5	0.5	0.6	0.6	0.9	3.5	0.9	0.4	0.3	0.2
<b>Aged 15–19 years</b>												
Employed												
Full time	'000	3.3	2.4	2.6	1.0	1.6	0.5	0.5	0.4	4.4	3.6	5.3
Part time	'000	4.3	3.7	3.4	1.5	1.8	0.6	0.5	0.5	5.1	5.7	7.4
Total	'000	5.3	4.2	4.4	1.8	2.5	0.8	0.6	0.6	6.5	6.4	9.1
Unemployed												
Looking for f/t work	'000	2.7	1.8	1.5	0.9	0.9	0.5	0.2	0.3	2.8	2.6	3.8
Looking for p/t work	'000	2.3	2.3	1.8	1.0	0.9	0.4	0.1	0.4	2.9	2.8	4.1
Total	'000	3.6	3.0	2.4	1.4	1.3	0.6	0.3	0.5	4.1	3.8	5.7
Labour force	'000	5.8	4.7	4.7	2.0	2.7	0.9	0.6	0.7	6.9	6.9	9.8
Not in labour force	'000	7.4	5.7	4.0	2.1	2.8	0.9	1.1	0.6	7.4	7.1	11.0
Unemployment rate												
Looking for f/t work	pts	3.0	3.4	2.0	4.4	2.2	5.3	5.8	5.3	1.5	2.2	1.3
Looking for p/t work	pts	1.5	1.7	1.5	2.3	1.7	3.1	3.0	3.4	1.2	0.9	0.7
Total	pts	1.5	1.6	1.2	2.2	1.4	3.0	3.8	2.8	1.0	0.9	0.7
Participation rate	pts	1.3	1.4	1.7	1.9	1.8	2.7	4.2	3.0	1.0	1.0	0.7
Unemployment to population ratio – looking for f/t work	pts	0.6	0.5	0.5	0.9	0.6	1.4	1.4	1.2	0.4	0.4	0.3

## STANDARD ERRORS *continued*

### MOVEMENT ESTIMATES

The following example illustrates how to use the standard error to interpret a movement estimate. Let us say that one month the published level estimate for females employed part time in Australia is 1,890,000; the next month the published level estimate is 1,900,000 and the associated standard error for the movement estimate is 10,600. The standard error is then used to interpret the published movement estimate of 10,000. For instance, the standard error of 10,600 indicates that:

- There are approximately two chances in three that the real movement between the two months falls within the range -600 to 20,600 (10,000 + or - 10,600)
- There are approximately nineteen chances in twenty that the real movement falls within the range -11,200 to 31,200 (10,000 + or - 21,200).

The following table shows the standard errors for this month's movement estimates.

		AUSTRALIA										
		NSW	Vic.	Qld	SA	WA	Tas.	NT	ACT	Males	Females	Persons
<b>Aged 15 years and over</b>												
Employed												
Full time	'000	13.8	10.7	9.4	4.0	5.4	1.7	1.6	1.6	17.0	12.2	21.7
Part time	'000	8.4	6.8	5.5	2.6	3.4	1.1	0.8	0.9	7.2	11.0	13.2
Total	'000	16.6	13.0	12.0	5.5	7.3	2.3	1.9	1.8	18.6	16.8	26.3
Unemployed												
Looking for f/t work	'000	7.8	5.6	4.9	2.0	2.5	1.2	0.4	0.6	8.6	6.9	11.3
Looking for p/t work	'000	4.9	3.7	3.2	1.4	1.6	0.6	0.4	0.5	4.7	5.5	7.4
Total	'000	9.4	6.9	6.0	2.5	2.9	1.4	0.6	0.8	9.9	9.0	13.8
Labour force	'000	17.1	13.3	12.5	5.8	7.5	2.4	1.9	1.9	19.1	17.2	27.1
Not in labour force	'000	16.0	12.8	10.5	5.0	6.3	2.1	1.7	1.7	14.4	18.7	25.2
Unemployment rate												
Looking for f/t work	pts	0.3	0.3	0.3	0.4	0.3	0.8	0.7	0.4	0.2	0.3	0.1
Looking for p/t work	pts	0.5	0.5	0.5	0.6	0.5	0.9	2.0	0.9	0.5	0.2	0.2
Total	pts	0.3	0.3	0.2	0.3	0.3	0.6	0.7	0.4	0.2	0.2	0.1
Participation rate	pts	0.3	0.3	0.4	0.5	0.5	0.6	1.3	0.7	0.2	0.2	0.2
<b>Aged 15-19 years</b>												
Employed												
Full time	'000	2.5	1.9	2.1	0.8	1.3	0.4	0.3	0.3	3.5	2.8	4.1
Part time	'000	3.6	2.8	2.6	1.1	1.5	0.5	0.4	0.5	3.9	4.4	5.5
Total	'000	4.1	3.2	3.2	1.3	1.8	0.6	0.5	0.5	4.9	4.9	6.5
Unemployed												
Looking for f/t work	'000	2.7	1.8	2.2	0.9	1.1	0.5	0.1	0.3	3.4	2.7	4.3
Looking for p/t work	'000	3.2	2.5	2.0	1.1	1.0	0.4	0.1	0.4	3.6	3.2	4.9
Total	'000	4.2	3.1	3.0	1.4	1.6	0.7	0.2	0.5	5.0	4.2	6.6
Labour force	'000	4.5	3.4	3.4	1.4	1.9	0.6	0.5	0.5	5.2	5.2	7.1
Not in labour force	'000	4.9	3.7	2.8	1.4	1.8	0.6	0.7	0.5	5.4	5.2	7.2
Unemployment rate												
Looking for f/t work	pts	3.3	3.5	2.5	4.5	2.5	6.0	6.6	5.7	1.7	2.4	1.4
Looking for p/t work	pts	1.7	1.8	1.6	2.6	1.9	3.5	3.2	3.4	1.4	1.0	0.8
Total	pts	1.6	1.7	1.4	2.3	1.6	3.4	3.9	3.0	1.1	1.0	0.7
Participation rate	pts	1.0	1.0	1.2	1.4	1.3	1.9	3.3	2.4	0.7	0.8	0.5
Unemployment to population ratio - looking for f/t work												
	pts	0.6	0.5	0.8	0.9	0.7	1.6	1.0	1.1	0.5	0.4	0.3

## GLOSSARY

<b>Actively looking for work</b>	Includes writing, telephoning or applying in person to an employer for work; answering an advertisement for a job; checking factory noticeboards or the touchscreens at the Centrelink offices; being registered with Centrelink as a jobseeker; checking or registering with any other employment agency; advertising or tendering for work; and contacting friends or relatives.
<b>Attending full-time education</b>	Persons aged 15–24 years enrolled at secondary or high school or enrolled as a full time student at a Technical and Further Education (TAFE) college, university, or other educational institution in the reference week.
<b>Attending school</b>	Persons aged 15–19 years enrolled at secondary or high school in the reference week.
<b>Attending tertiary educational institution full time</b>	Persons aged 15–24 years enrolled full time at a TAFE college, university, or other educational institution in the reference week, except those persons aged 15–19 years who were still attending school.
<b>Civilian population aged 15 years and over</b>	All usual residents of Australia aged 15 years and over except members of the permanent defence forces, certain diplomatic personnel of overseas governments customarily excluded from census and estimated population counts, overseas residents in Australia, and members of non-Australian defence forces (and their dependants) stationed in Australia.
<b>Employed</b>	All persons aged 15 years and over who, during the reference week: <ul style="list-style-type: none"><li>■ worked for one hour or more for pay, profit, commission or payment in kind in a job or business, or on a farm (comprising employees, employers and own account workers); or</li><li>■ worked for one hour or more without pay in a family business or on a farm (i.e. contributing family workers); or</li><li>■ were employees who had a job but were not at work and were:<ul style="list-style-type: none"><li>■ away from work for less than four weeks up to the end of the reference week; or</li><li>■ away from work for more than four weeks up to the end of the reference week and received pay for some or all of the four week period to the end of the reference week; or</li><li>■ away from work as a standard work or shift arrangement; or</li><li>■ on strike or locked out; or</li><li>■ on workers' compensation and expected to return to their job; or</li></ul></li><li>■ were employers or own account workers, who had a job, business or farm, but were not at work.</li></ul>
<b>Employment to population ratio</b>	For any group, the number of employed persons expressed as a percentage of the civilian population in the same group.
<b>Full-time workers</b>	Employed persons who usually worked 35 hours or more a week (in all jobs) and those who, although usually working less than 35 hours a week, worked 35 hours or more during the reference week.
<b>Labour force</b>	For any group, persons who were employed or unemployed, as defined.
<b>Labour force status</b>	A classification of the civilian population aged 15 years and over into employed, unemployed or not in the labour force, as defined. The definitions conform closely to the international standard definitions adopted by the International Conferences of Labour Statisticians.
<b>Not in labour force</b>	Persons who were not in the categories employed or unemployed as defined.
<b>Participation rate</b>	For any group, the labour force expressed as a percentage of the civilian population aged 15 years and over in the same group.
<b>Part-time workers</b>	Employed persons who usually worked less than 35 hours a week (in all jobs) and either did so during the reference week, or were not at work in the reference week.

## GLOSSARY *continued*

---

<b>Response rate</b>	The number of fully responding dwellings expressed as a percentage of the total number of dwellings excluding sample loss. Examples of sample loss include: dwellings where all persons are out of scope and/or coverage; vacant dwellings; dwellings under construction; dwellings converted to non-dwellings; derelict dwellings; and demolished dwellings.
<b>Seasonally adjusted series</b>	A time series of estimates with the estimated effects of normal seasonal variation removed. See Explanatory Notes 21 to 25 for more detail.
<b>Trend series</b>	A smoothed seasonally adjusted series of estimates. See Explanatory Notes 26 to 28 for more detail.
<b>Unemployed</b>	Persons aged 15 years and over who were not employed during the reference week, and: <ul style="list-style-type: none"><li>■ had actively looked for full-time or part-time work at any time in the four weeks up to the end of the reference week and were available for work in the reference week; or</li><li>■ were waiting to start a new job within four weeks from the end of the reference week and could have started in the reference week if the job had been available then.</li></ul>
<b>Unemployed looking for full-time work</b>	Unemployed persons who: <ul style="list-style-type: none"><li>■ actively looked for full-time work; or</li><li>■ were waiting to start a new full-time job.</li></ul>
<b>Unemployed looking for part-time work</b>	Unemployed persons who: <ul style="list-style-type: none"><li>■ actively looked for part-time work only; or</li><li>■ were waiting to start a new part-time job.</li></ul>
<b>Unemployment rate</b>	For any group, the number of unemployed persons expressed as a percentage of the labour force in the same group.
<b>Unemployment to population ratio</b>	For any group, the number of unemployed persons expressed as a percentage of the civilian population in the same group.



## FOR MORE INFORMATION . . .

- INTERNET*      **www.abs.gov.au** the ABS web site is the best place for data from our publications and information about the ABS.
- LIBRARY*      A range of ABS publications are available from public and tertiary libraries Australia wide. Contact your nearest library to determine whether it has the ABS statistics you require, or visit our web site for a list of libraries.

## INFORMATION AND REFERRAL SERVICE

Our consultants can help you access the full range of information published by the ABS that is available free of charge from our web site, or purchase a hard copy publication. Information tailored to your needs can also be requested as a 'user pays' service. Specialists are on hand to help you with analytical or methodological advice.

- PHONE*      1300 135 070
- EMAIL*      client.services@abs.gov.au
- FAX*      1300 135 211
- POST*      Client Services, ABS, GPO Box 796, Sydney NSW 2001

## FREE ACCESS TO STATISTICS

All ABS statistics can be downloaded free of charge from the ABS web site.

- WEB ADDRESS*      [www.abs.gov.au](http://www.abs.gov.au)



2620200010067

ISSN 1448 2819

RRP \$26.00